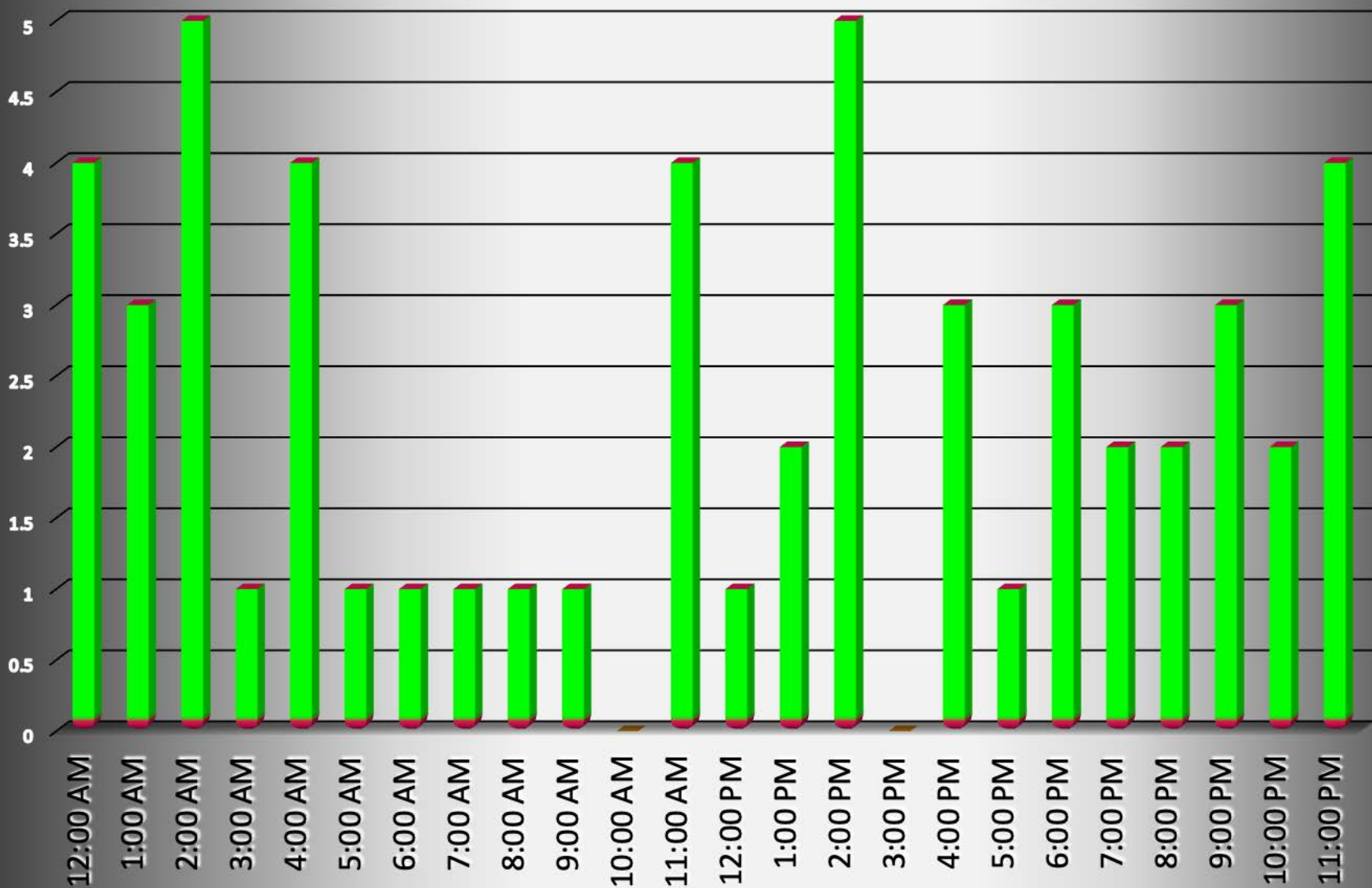


| West_Carrollton-2011 |                    |      |                   |      |     |                   |      |           |
|----------------------|--------------------|------|-------------------|------|-----|-------------------|------|-----------|
| Incident             |                    |      | Arrestee          |      |     | Complainant       |      |           |
| Incident #           | Date Reported      | Time | Age or Birth Year | Race | Sex | Age or Birth Year | Race | Sex       |
| 20110070             | January 6, 2011    | 1406 | 34                | W    | M   | 30                | W    | F         |
| 20110101             | January 23, 2011   | 0220 | 34                | W    | M   | 33                | W    | F         |
| 20110126             | January 27, 2011   | 1650 | 39                | W    | M   | 31                | W    | F         |
| 20110166             | February 7, 2011   | 2105 | 40                | W    | M   | 34                | W    | F         |
| 20110179             | February 8, 2011   | 0043 | 35                | W    | F   | 36                | W    | M         |
| 20110206             | February 13, 2011  | 1339 | 35                | W    | M   | 29                | W    | F         |
| 20110186             | February 19, 2011  | 1500 | 21                | B    | M   | 20                | B    | F         |
| 20110272             | February 27, 2011  | 1200 | 25                | W    | F   | 23                | W    | M         |
| 20110410             | March 21, 2011     | 0957 | 53                | B    | F   | ATA AVAILABLE     |      |           |
| 20110512             | April 5, 2011      | 1200 | 25                | W    | M   | ATA AVAIL         | DATA | AVAILABLE |
| 20110511             | April 9, 2011      | 0019 | 40                | W    | M   | ATA AVAILABLE     |      |           |
| 20110518             | April 10, 2011     | 0450 | 36                | W    | M   | 25                | W    | F         |
| 20110567             | April 17, 2011     | 1154 | 22                | B    | F   | 22                | B    | M         |
| 20110631             | April 29, 2011     | 1843 | 24                | W    | M   | 29                | W    | F         |
| 20110647             | May 1, 2011        | 1450 | 19                | W    | F   | 25                | W    | M         |
| 20110698             | May 10, 2011       | 1635 | 48                | W    | M   | ATA AVAIL         | DATA | AVAILABLE |
| 20110703             | May 11, 2011       | 0020 | 40                | W    | M   | ATA AVAIL         | DATA | AVAILABLE |
| 20110728             | May 14, 2011       | 1830 | 34                | W    | M   | 34                | W    | F         |
| 20110775             | May 22, 2011       | 0300 | 27                | W    | M   | 25                | W    | F         |
| 20110797             | May 25, 2011       | 2112 | 29                | W    | M   | 25                | W    | F         |
| 20110809             | May 27, 2011       | 0402 | 39                | W    | M   | 30                | W    | M         |
| 20110830             | May 30, 2011       | 0535 | 23                | W    | M   | 21                | W    | F         |
| 20110878             | June 6, 2011       | 0409 | 20                | B    | F   | 21                | B    | M         |
| 20110879             | June 6, 2011       | 0730 | 46                | W    | M   | 40                | W    | F         |
| 20110913             | June 11, 2011      | 0250 | 27                | W    | F   | 31                | W    | F         |
| 20110984             | June 21, 2011      | 2242 | 28                | B    | M   | 22                | B    | F         |
| 20110713             | June 29, 2011      | 1700 | 56                | W    | F   | 8                 | W    | F         |
| 20111078             | July 4, 2011       | 0429 | 27                | B    | M   | 31                | B    | F         |
| 20111089             | July 5, 2011       | 2011 | 42                | W    | F   | 46                | W    | M         |
| 20111102             | July 7, 2011       | 0815 | 26                | W    | M   | 26                | W    | F         |
| 20111122             | July 10, 2011      | 1140 | 64                | W    | M   | ATA AVAIL         | DATA | AVAILABLE |
| 20111183             | July 19, 2011      | 0345 | 46                | W    | M   | 46                | W    | F         |
| 20111211             | July 21, 2011      | 2133 | 32                | W    | F   | 13                | W    | M         |
| 20111211             | July 22, 2011      | 1730 | 44                | W    | M   | 32                | W    | F         |
| 20111219             | July 24, 2011      | 0150 | 34                | W    | M   | 23                | W    | F         |
| 20111080             | July 28, 2011      | 2312 | 29                | B    | M   | ATA AVAIL         | DATA | AVAILABLE |
| 21111258             | July 29, 2011      | 1911 | 48                | B    | M   | 26                | B    | F         |
| 20111265             | July 31, 2011      | 1408 | 64                | W    | F   | 38                | W    | F         |
| 20111284             | August 1, 2011     | 2310 | 19                | W    | F   | 22                | W    | M         |
| 20110901             | August 1, 2011     | 1500 | 20                | W    | M   | 18                | W    | F         |
| 20111408             | August 21, 2011    | 2022 | 54                | B    | M   | 27                | B    | F         |
| 20111437             | August 26, 2011    | 1250 | 27                | W    | M   | 31                | W    | F         |
| 20110819             | September 12, 2011 | 1845 | 31                | W    | M   | 32                | W    | F         |
| 20111578             | September 20, 2011 | 2337 | 27                | W    | M   | 27                | W    | F         |
| 20111660             | October 3, 2011    | 2339 | 26                | B    | F   | 29                | B    | M         |
| 20111980             | October 5, 2011    | 0251 | 38                | W    | M   | 32                | W    | F         |
| 20111687             | October 8, 2011    | 0615 | 24                | B    | M   | 25                | B    | F         |
| 20111706             | October 11, 2011   | 0115 | 30                | W    | F   | 34                | B    | M         |
| 20111792             | October 27, 2011   | 0015 | 32                | W    | M   | 32                | W    | F         |
| 20111836             | November 4, 2011   | 1914 | 21                | W    | M   | 53                | W    | M         |
| 20111862             | November 10, 2011  | 0254 | 33                | W    | M   | 54                | W    | F         |
| 20111897             | November 19, 2011  | 0150 | 19                | W    | F   | 47                | W    | F         |
| 20111275             | December 11, 2011  | 1325 | 32                | W    | M   | ATA AVAILABLE     |      |           |
| 20111946             | December 31, 2011  | 2215 | 24                | B    | M   | 21                | B    | F         |

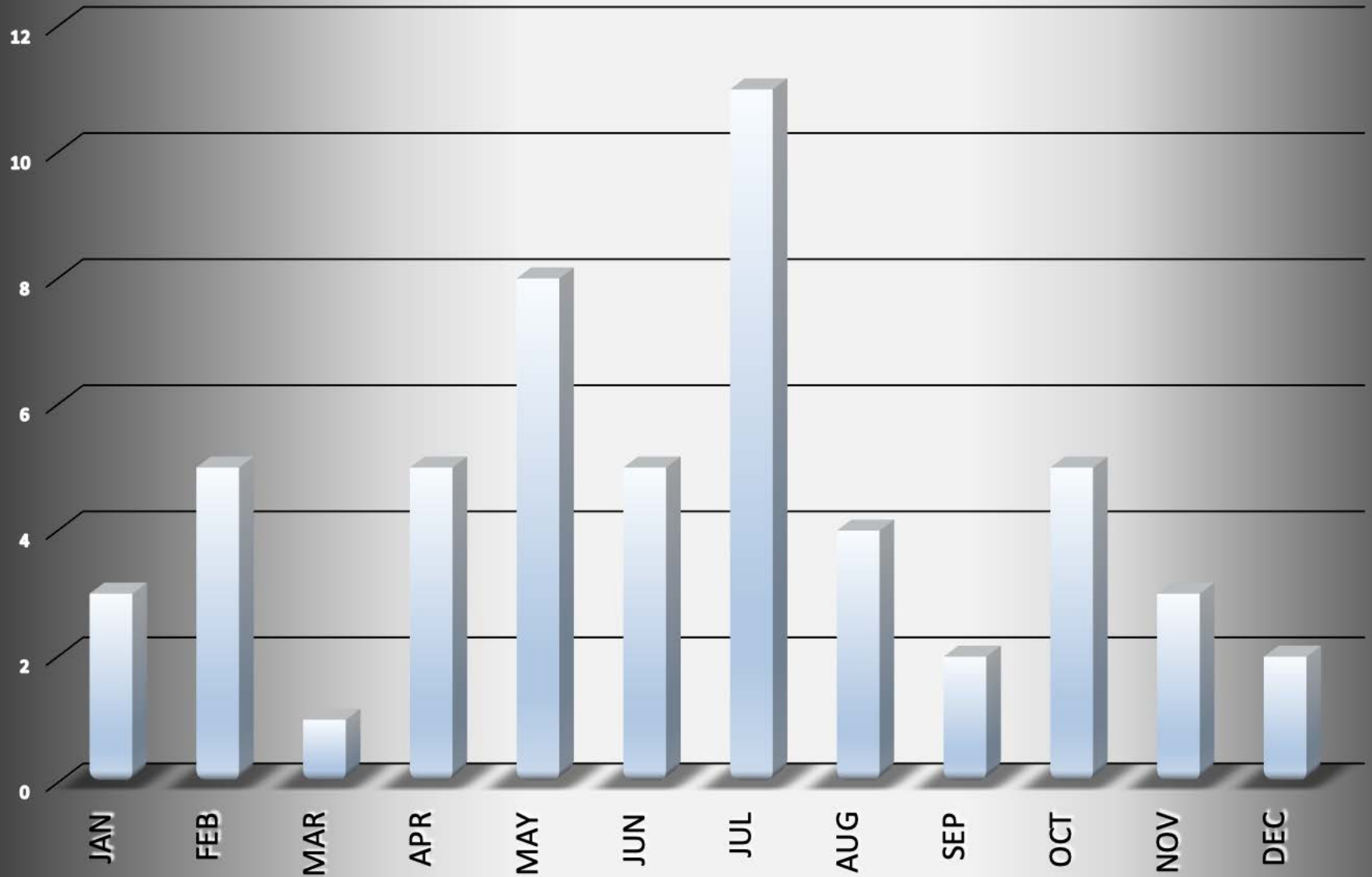
# West\_Carrollton-2011

## # Arrests by hour of the day - 54 total



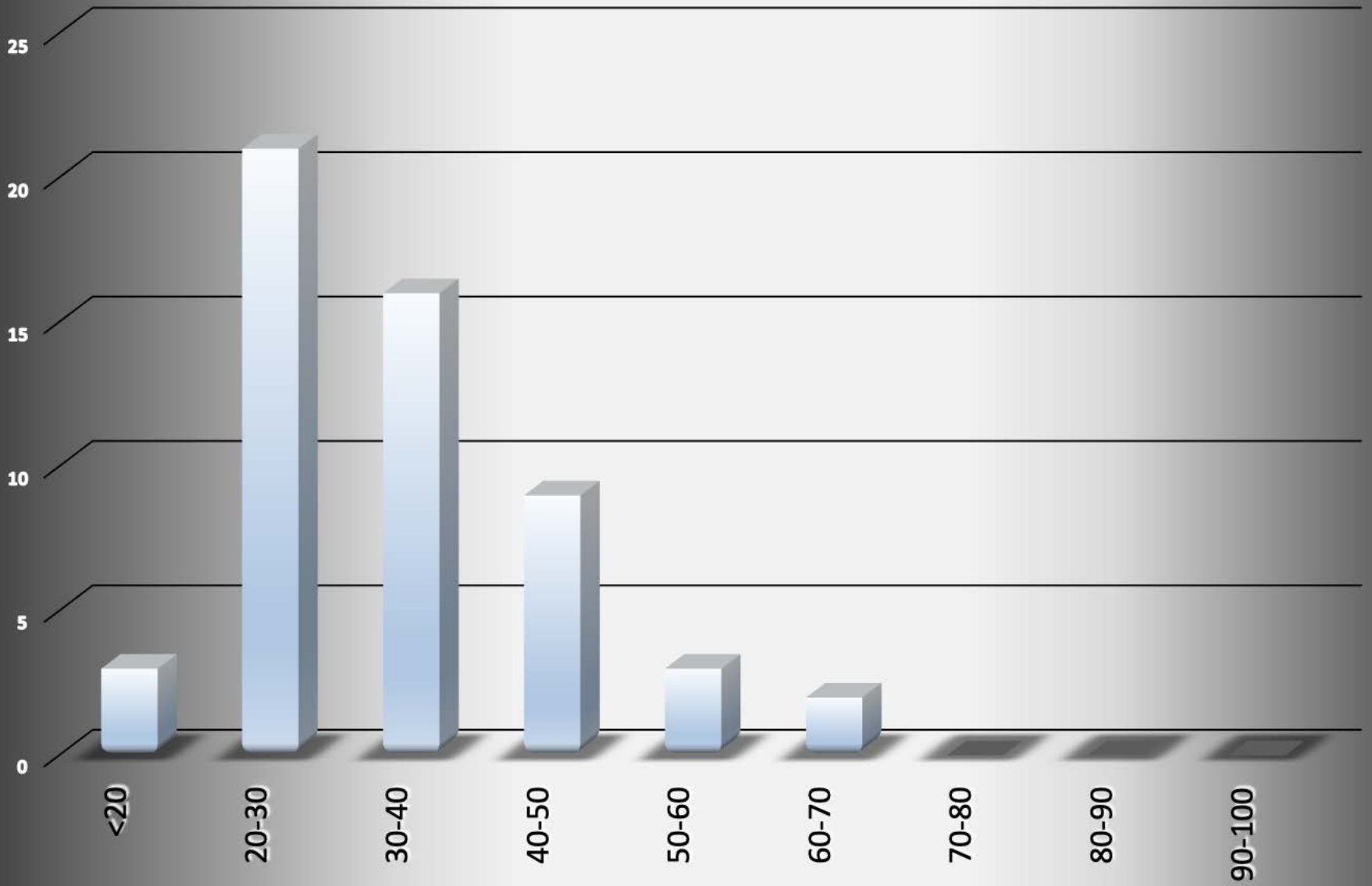
# West\_Carrollton-2011

## # Arrests by Month - 54 total



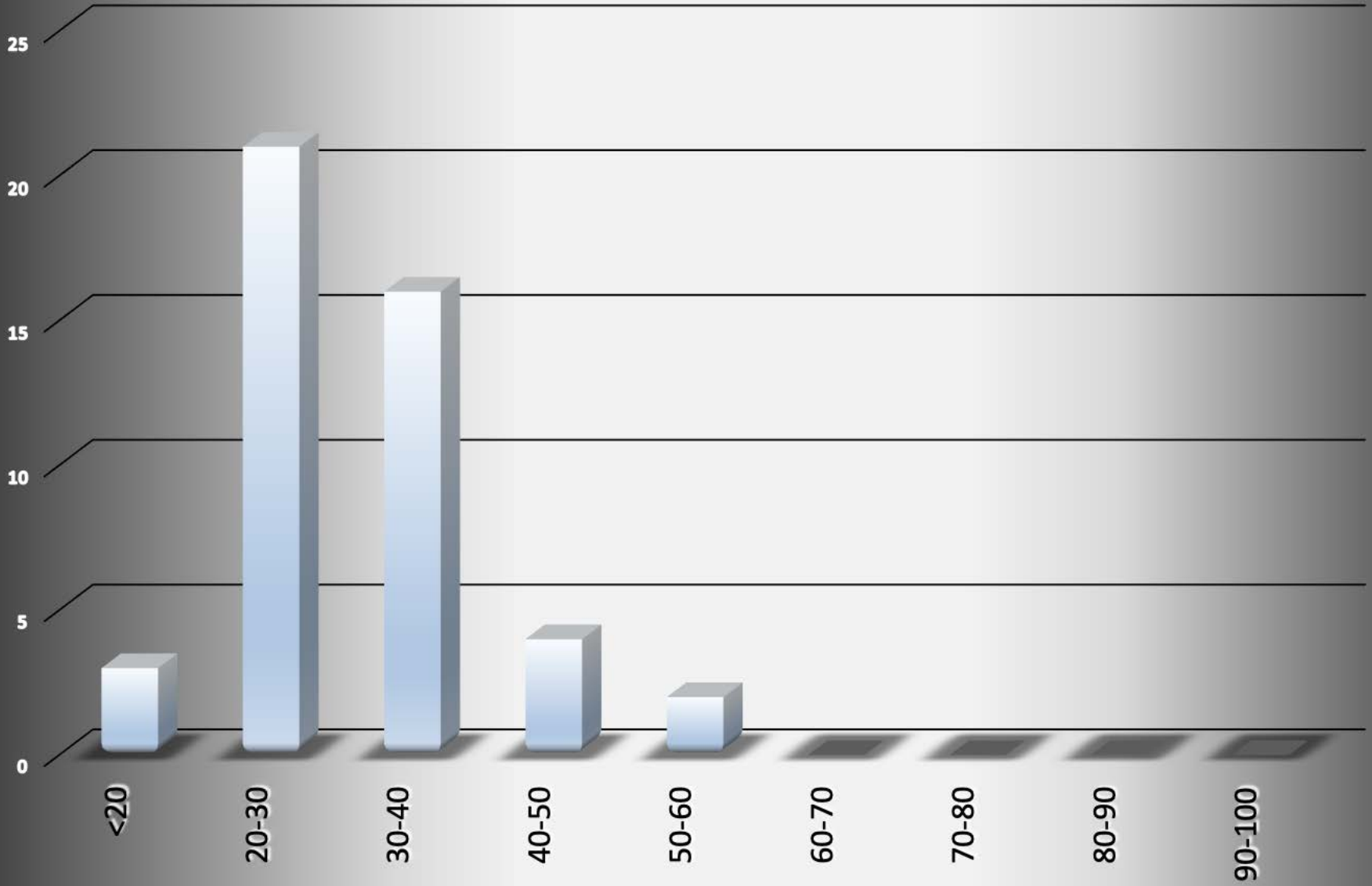
# West\_Carrollton-2011

## Age of Arrestee

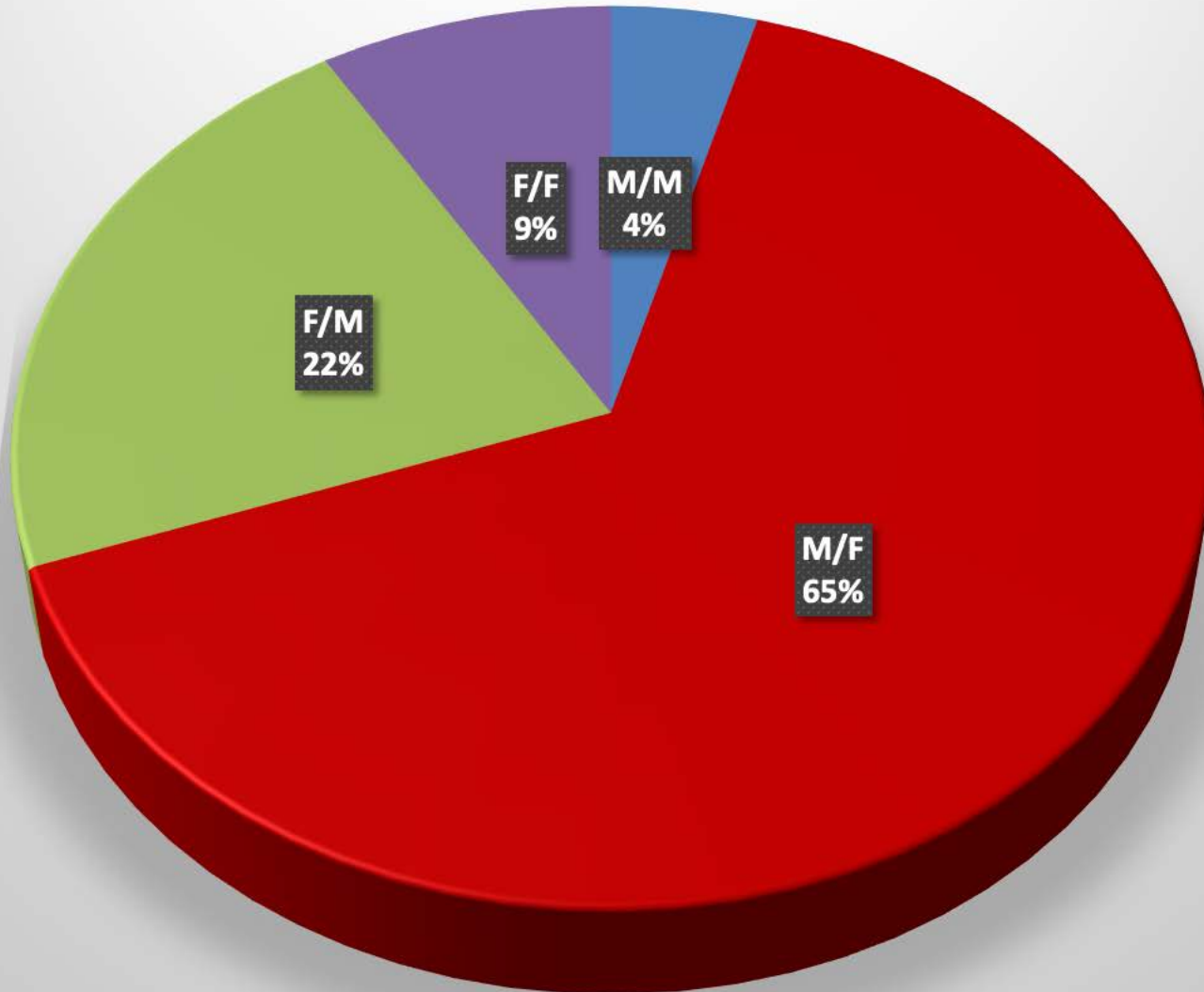


# West\_Carrollton-2011

## Age of Complainant

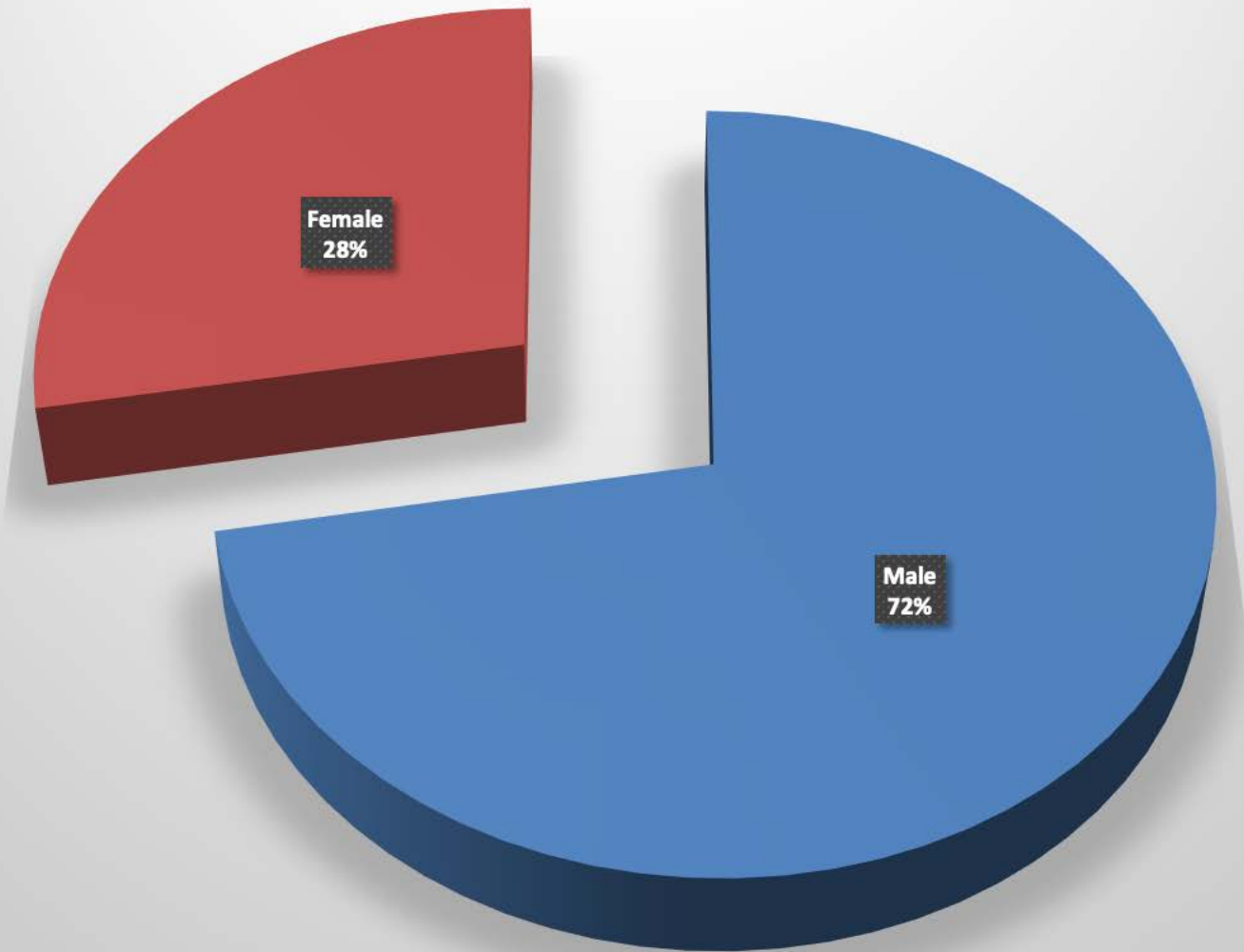


**West\_Carrollton-2011**  
**Arrestee/Complainant Sex - 54 total**



# West\_Carrollton-2011

## Sex of Arrestees



# West\_Carrollton-2011 Sex of Complainants

