

**Miami\_Township-2011**

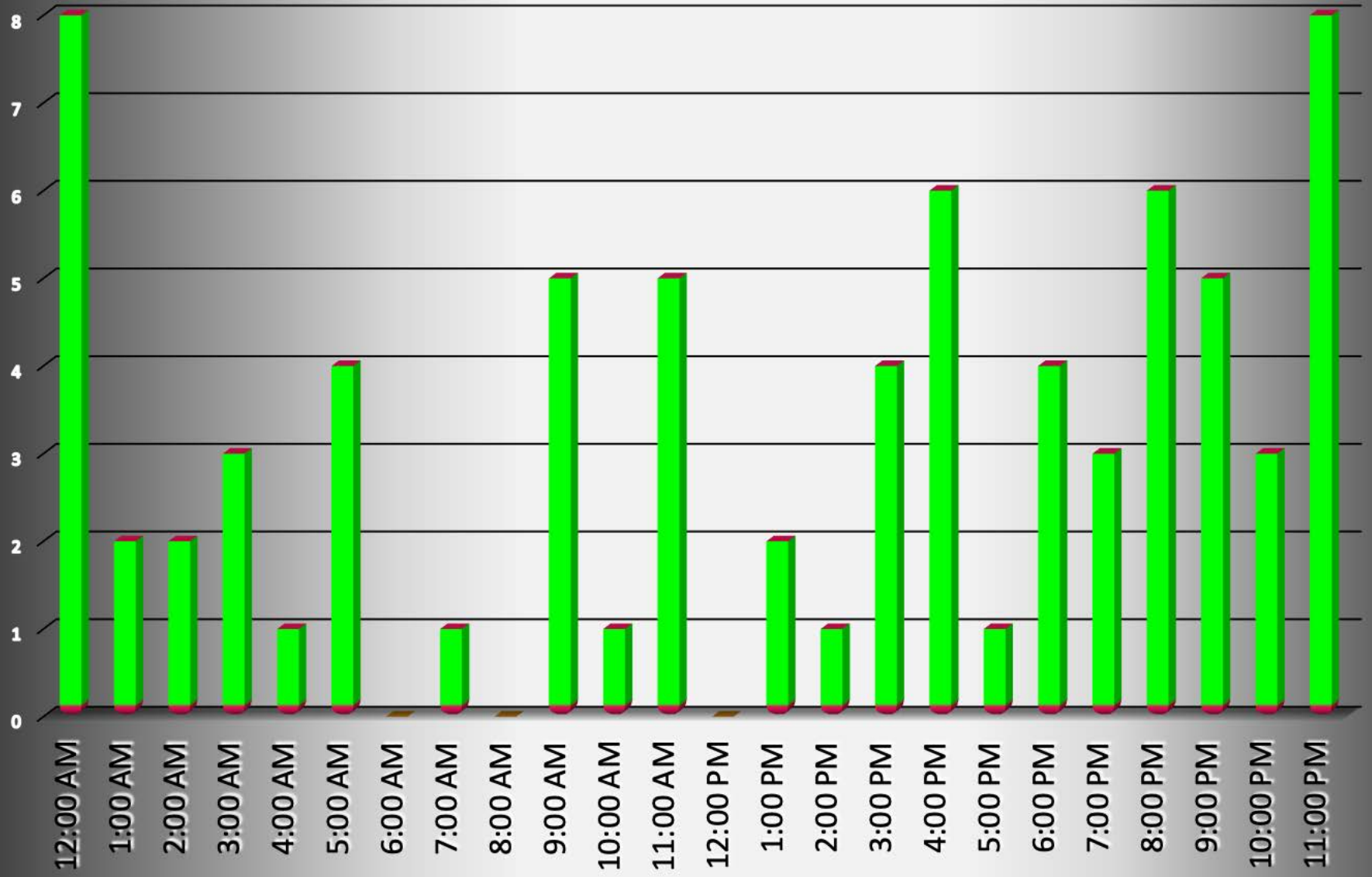
Incident			Arrestee			Complainant		
Incident #	Date Reported	Time	Age or Birth Year	Race	Sex	Age or Birth Year	Race	Sex
11-74	1/8/11	0948	13	B	M	17	B	M
11-74	1/8/11	0948				19	B	M
11-83	1/9/11	0245	18	W	F	15	W	M
11-118	1/13/11	0535	31	B	M	28	B	F
11-329	2/1/11	1145	16	W	M	35	W	F
11-336	2/2/11	1427	21	W	F	64	W	F
11-340	2/2/11	1957	17	W	M	64	W	M
11-358	2/4/11	1848	31	W	F	39	W	M
11-377	2/2/11	0031	25	A	F	26	W	M
11-534	2/20/11	2226	40	W	M	44	W	F
11-544	2/21/11	2047	37	W	M	31	W	F
11-615	2/26/11	1545	12	W	M	9	W	M
11-615	2/26/11	1545				3	W	F
11-638	2/28/11	1153	16	W	M	58	W	F
11-638	2/28/11	1153				53	W	M
11-638	2/28/11	1153				34	W	F
11-779	3/14/11	1829	17	B	F	38	B	F
11-787	3/15/11	0943	22	W	F	35	B	M
11-795	3/15/11	2353	35	B	F	17	B	M
11-797	3/16/11	0514	37	W	M	54	W	M
11-892	3/22/11	0002	19	W	M	23	W	M
11-903	3/23/11	0016	42	W	M	59	W	F
11-951	3/27/11	2303	26	W	F	31	W	M
11-1075	4/7/11	1835	11	B	M	29	B	F
11-1109	4/10/11	0305	33	W	M	31	W	F
11-1170	4/16/11	0730	39	W	M	31	W	F
11-1258	4/22/11	2209	30	B	M	26	W	F
11-1283	4/25/11	0938	12	W	F	40	W	F
11-1376	5/3/11	1637	15	B	F	38	B	F
11-1423	5/7/11	1541	16	B	F	22	B	M
11-1545	5/17/11	2156	12	W	F	31	W	F
11-1556	5/19/11	0128	30	W	M	24	W	F
11-1771	6/4/11	0334	23	W	M	26	W	M
11-1843	6/10/11	1955	30	W	M	29	W	M
11-1932	6/18/11	2321	31	W	M	54	W	M
11-1932	6/18/11	2321				51	W	F
11-1932	6/18/11	2321				28	W	M
11-1932	6/18/11	2321				32	W	F
11-1932	6/18/11	2321				3	W	M
11-2110	7/2/11	0051	27	W	M	44	W	F
11-2183	7/7/11	2342	38	W	F	40	W	M
11-2216	7/10/11	0143	32	B	M	33	B	F
11-2427	7/31/11	1323	52	W	M	50	W	F
11-2503	8/5/11	2218	56	B	F	36	B	F
11-2572	8/12/11	0023	21	W	M	48	W	F
11-2765	8/26/11	1515	32	W	M	30	W	F
11-2781	8/28/11	0023	36	W	F	40	W	M
11-2816	8/30/11	0028	35	W	M	42	W	M
11-2912	9/7/11	1626	15	B	F	37	W	F
11-2928	9/9/11	0056	42	W	F	31	B	M
11-2964	9/11/11	1904	15	W	F	34	W	F
11-3075	9/20/11	1759	16	W	F	36	B	F
11-3189	9/28/11	2009	14	W	M	37	W	F
11-3196	9/29/11	2014	31	B	M	29	B	F
11-3334	10/12/11	2115	43	W	F	42	W	F

**Miami\_Township-2011**

Incident			Arrestee			Complainant		
Incident #	Date Reported	Time	Age or Birth Year	Race	Sex	Age or Birth Year	Race	Sex
11-3403	10/16/11	2105	18	W	M	19	W	F
11-3403	10/16/11	2105	46	W	F			
11-3462	10/22/11	0421	38	W	M	37	W	F
11-3546	10/29/11	0536	32	W	M	32	W	F
11-3581	10/31/11	1824	17	W	F	14	W	F
11-3596	11/2/11	1623	16	B	F	11	B	M
11-3596	11/2/11	1623	11	B	M	16	B	F
11-3650	11/6/11	0344	21	W	F	29	W	M
11-3881	11/26/11	2049	25	W	F	35	W	M
11-3881	11/26/11	2049				9	W	F
11-3928	11/30/11	1605	13	W	M	49	W	M
11-3957	12/2/11	2024	38	W	M	29	W	F
11-3958	12/2/11	2136	10	B	M	11	B	M
11-3962	12/3/11	0242	24	W	M	25	W	F
11-3964	12/3/11	0545	31	W	M	19	W	F
11-4048	12/9/11	0942	24	W	M	23	W	F
11-4053	12/9/11	1351	23	B	M	30	A	F
11-4092	12/11/11	1627	28	W	M	27	W	F
11-4203	12/19/11	1033	36	B	M	34	B	F
11-4293	12/25/11	1131	24	B	M	27	B	F

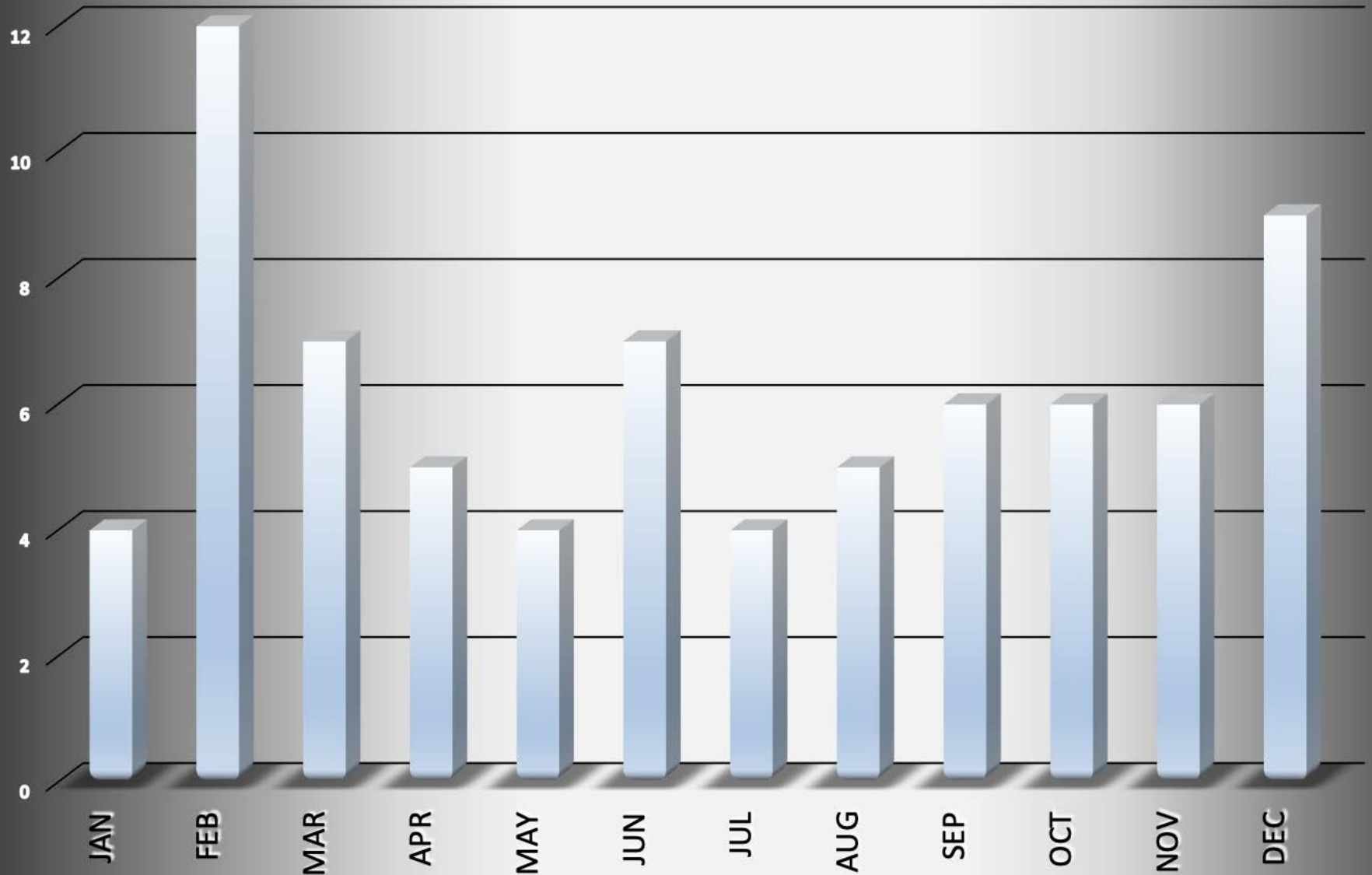
# Miami\_Township-2011

## # Arrests by hour of the day - 75 total



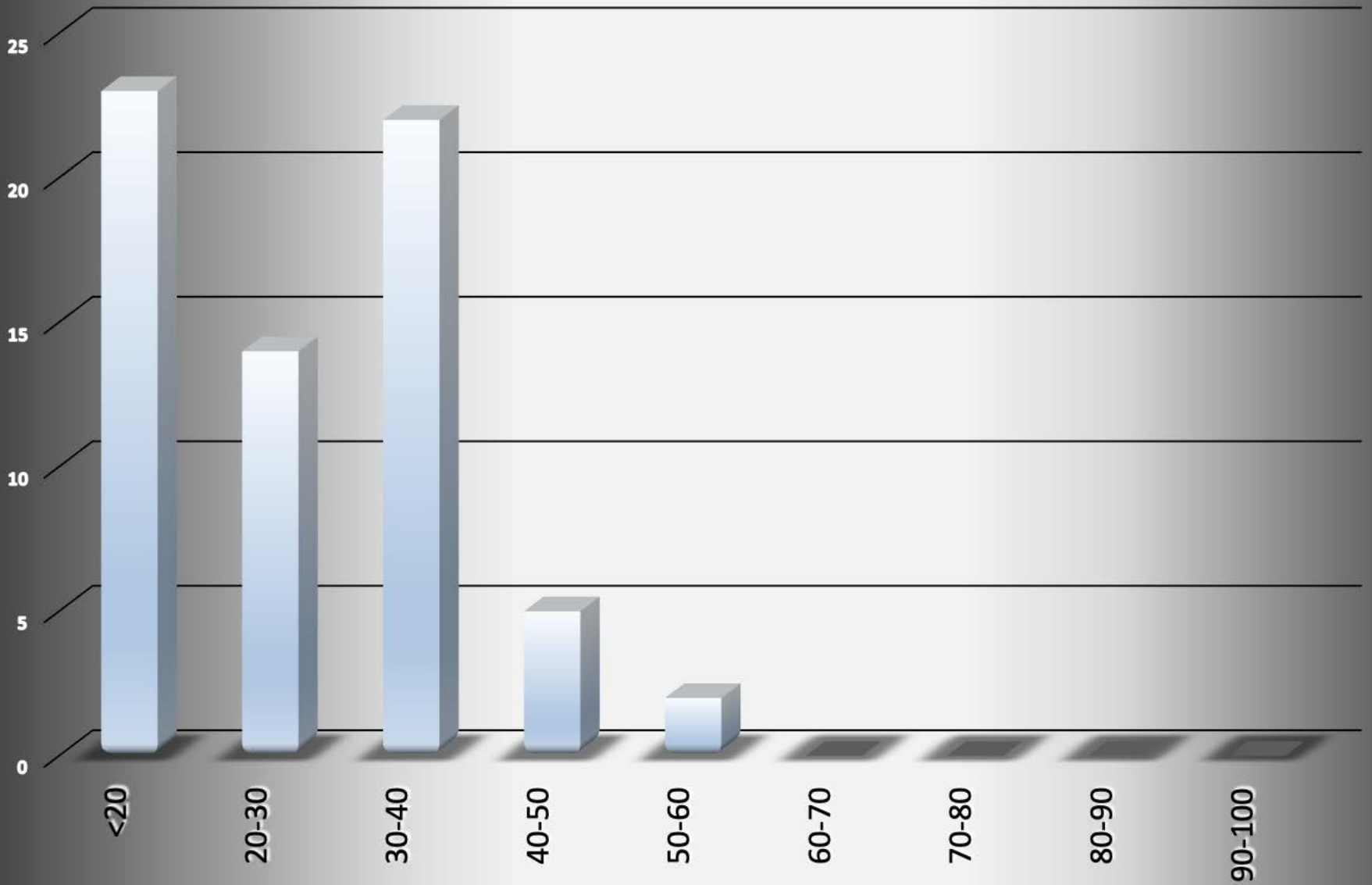
# Miami\_Township-2011

## # Arrests by Month - 75 total



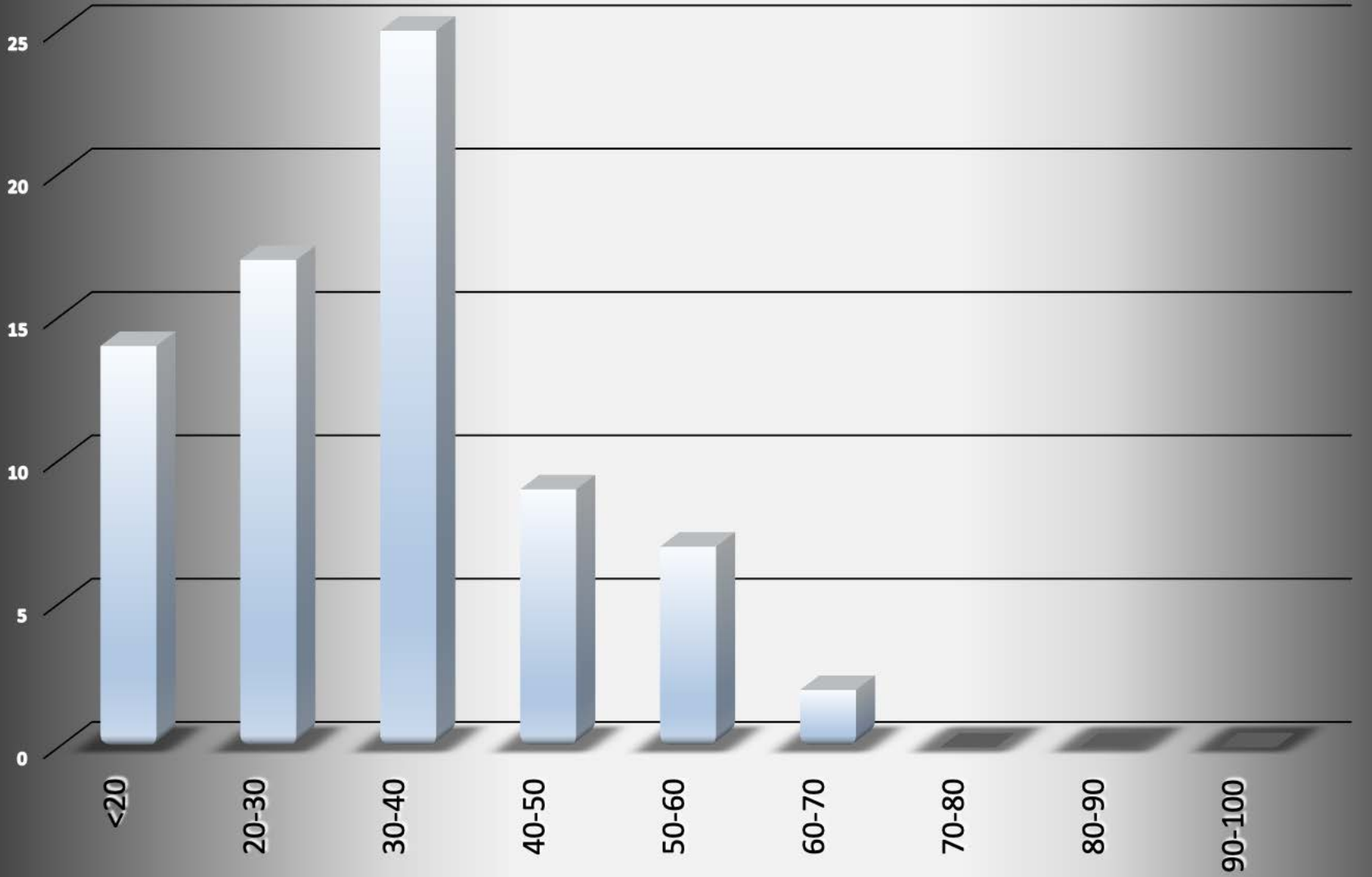
# Miami\_Township-2011

## Age of Arrestee

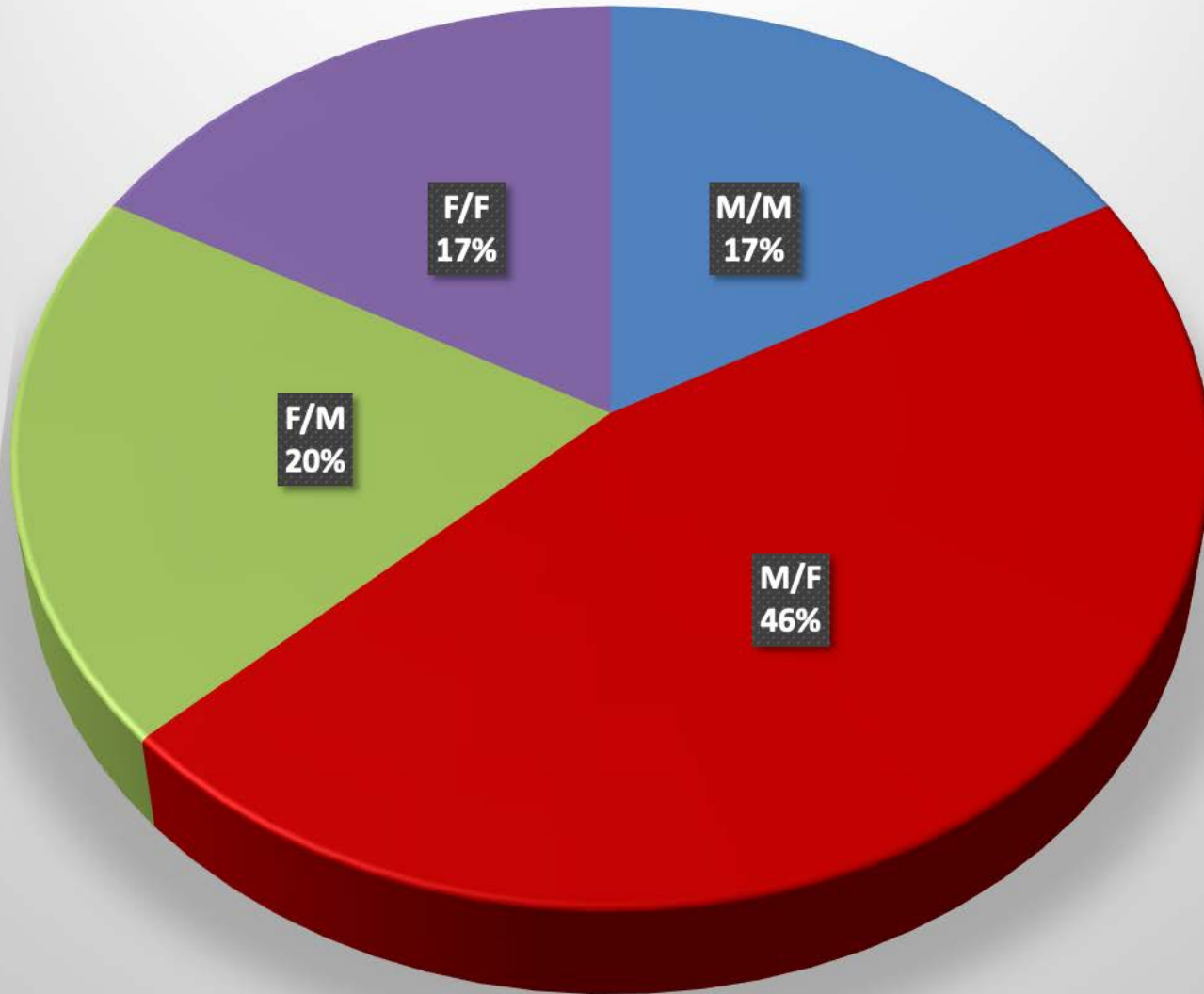


# Miami\_Township-2011

## Age of Complainant

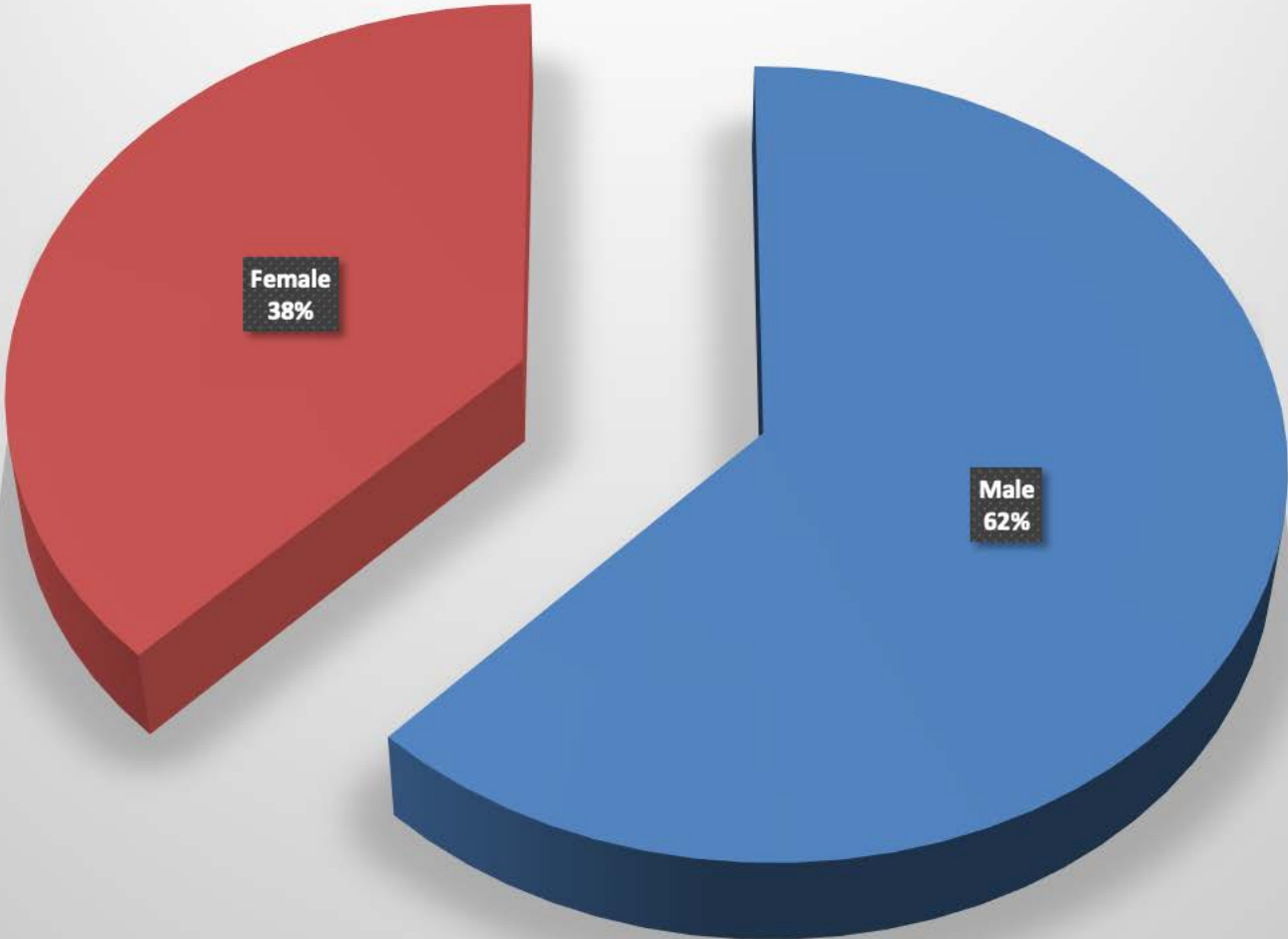


**Miami\_Township-2011**  
**Arrestee/Complainant Sex - 75 total**



# Miami\_Township-2011

## Sex of Arrestees





# Miami\_Township-2011

## Sex of Complainants

