

Huber Heights-2011

Incident			Arrestee			Complainant		
Incident #	Date Reported	Time	Age or Birth Year	Race	Sex	Age or Birth Year	Race	Sex
1-11-000011	January 1, 2011	2002	6/13/84	W	M	6/20/74	W	F
1-11-000011	January 1, 2011	2002	6/13/84	W	M	11/15/48	W	F
1-11-000032	January 3, 2011	1858	6/30/97	W	F	10/6/81	W	M
1-11-000057	January 6, 2011	1347	11/4/61	W	M	8/22/92	W	M
1-11-000077	January 8, 2011	2137	9/24/87	W	F	10/24/89	W	F
1-11-000082	January 9, 2011	0238	3/16/72	B	M	8/2/85	W	F
1-11-000072	January 9, 2011	0533	11/25/74	B	M	4/5/85	B	F
1-11-000153	January 17, 2011	1652	2/26/61	W	M	11/16/66	W	F
1-11-000166	January 18, 2011	2111	5/11/92	W	F	6/17/73	W	F
1-11-000176	January 19, 2011	1712	12/9/95	W	F	8/12/60	W	M
1-11-000203	January 23, 2011	2158	7/18/76	W	M	12/15/79	W	F
1-11-000225	January 25, 2011	1439	4/4/61	W	F	10/9/90	W	F
1-11-000262	January 28, 2011	1526	2/20/90	W	M	1/16/67	W	M
1-11-000314	February 4, 2011	1305	9/18/86	B	M	5/28/88	B	F
1-11-000333	February 5, 2011	2144	9/6/22	W	M	3/10/21	W	F
1-11-000367	February 6, 2011	1347	8/6/82	B	M	1/21/77	W	F
1-11-000388	February 10, 2011	1915	3/1/95	W	M	4/29/71	W	F
1-11-000400	February 11, 2011	1533	1/3/97	W	M	2/12/72	W	F
1-11-000424	February 14, 2011	0317	3/25/91	B	F	6/11/98	B	F
1-11-000443	February 15, 2011	1650	9/19/53	W	M	12/10/53	W	F
1-11-000471	February 17, 2011	1559	5/16/91	W	M	9/20/71	W	M
1-11-000521	February 20, 2011	1938	4/16/73	W	M	6/22/71	W	F
1-11-000537	February 22, 2011	2043	12/9/94	B	M	ATA AVAILABLE		
1-11-000581	February 27, 2011	0527	4/13/81	W	M	12/29/69	K	F
1-11-000600	March 1, 2011	2129	5/9/97	B	M	10/10/63	K	F
1-11-000604	March 2, 2011	0335	10/21/84	B	M	12/11/81	B	F
1-11-000638	March 5, 2011	0030	3/15/65	W	M	7/21/66	W	F
1-11-000649	March 5, 2011	2332	9/27/73	W	M	10/19/76	W	F
1-11-000651	March 6, 2011	0328	11/30/83	W	F	2/5/81	W	M
1-11-000655	March 6, 2011	2334	11/11/54	B	M	5/10/72	B	F
1-11-000726	March 13, 2011	2330	3/31/67	B	M	7/9/68	B	F
1-11-000744	March 16, 2011	0815	10/25/75	W	M	3/6/76	W	F
1-11-000968	April 3, 2011	0436	4/22/91	W	F	9/28/82	W	M
1-11-000993	April 5, 2011	0228	10/9/88	B	M	12/4/79	B	Ff
1-11-001033	April 7, 2011	2239	11/3/80	B	M	5/19/80	B	F
1-11-001047	April 9, 2011	0338	11/28/81	B	M	2/10/56	B	F
1-11-001064	April 10, 2011	1058	6/16/85	B	M	1/13/87	B	F
1-11-001092	April 12, 2011	1659	1/3/73	W	F	3/31/94	W	M
1-11-001168	April 18, 2011	1809	9/25/97	B	M	5/4/78	B	F
1-11-001172	April 18, 2011	2023	12/9/94	B	M	10/10/63	W	F
1-11-001187	April 20, 2011	1716	6/28/98	W	M	10/20/87	W	F
1-11-001214	April 22, 2011	1555	6/20/80	W	M	9/29/90	W	F
1-11-001232	April 24, 2011	0142	7/4/64	W	F	7/8/61	W	M
1-11-001278	April 28, 2011	1139	10/30/90	B	M	12/11/81	B	F
1-11-001293	April 29, 2011	2230	6/10/94	W	M	6/25/93	W	M
1-11-001312	May 1, 2011	1326	4/7/64	W	M	2/7/55	W	F
1-11-001324	May 2, 2011	1452	4/25/81	B	M	5/16/84	B	F
1-11-001333	May 2, 2011	2025	2/7/88	B	M	7/22/91	B	F
1-11001337	May 3, 2011	1627	7/28/56	W	M	6/3/75	W	M
1-11-001341	May 3, 2011	2307	1/29/74	W	F	11/15/91	W	M
1-11001441	May 11, 2011	1536	1/12/84	W	M	4/18/79	W	F
1-11-001453	May 12, 2011	1930	6/2/95	W	F	11/10/75	W	F
1-11-001479	May 13, 2011	2333	10/25/76	W	F	5/4/60	W	M
1-11-001501	May 15, 2011	2127	9/13/71	W	M	6/29/73	W	F
1-11-001557	May 20, 2011	1841	2/12/85	A	M	5/23/88	W	F

Huber Heights-2011

Incident			Arrestee			Complainant		
Incident #	Date Reported	Time	Age or Birth Year	Race	Sex	Age or Birth Year	Race	Sex
1-11-001576	May 22, 2011	1412	1/16/81	W	M	5/8/86	B	F
1-11-001616	May 25, 2011	1444	1/24/95	B	M	9/1/69	B	F
1-11-001626	May 25, 2011	2233	5/4/52	W	M	6/26/58	W	F
1-11-001680	May 29, 2011	0135	4/25/81	B	M	5/16/84	B	F
1-11-001333	May 2, 2011	2025	2/7/88	B	M	7/22/91	B	F
1-11-001337	May 3, 2011	1627	7/28/56	W	M	6/3/75	W	M
1-11-001341	May 3, 2011	2307	1/29/74	W	F	11/15/91	W	M
1-11-001441	May 11, 2011	1536	1/12/84	W	M	4/18/79	W	F
1-11-001453	May 12, 2011	1930	6/2/95	W	F	11/10/75	W	F
1-11-001479	May 13, 2011	2333	10/25/76	W	F	5/4/60	W	M
1-11-001501	May 15, 2011	2127	9/13/71	W	M	6/29/73	W	F
1-11-001557	May 20, 2011	1041	2/12/85	A	M	5/23/88	W	F
1-11-001576	May 22, 2011	1412	1/16/81	W	M	5/8/86	B	F
1-11-001616	May 25, 2011	1444	1/24/95	B	M	9/1/69	B	F
1-11-001626	May 26, 2011	2233	5/4/52	W	M	6/26/58	W	F
1-11-001680	May 29, 2011	0135	3/8/78	W	M	6/13/56	W	M
1-11-001702	May 31, 2011	0121	2/4/80	W	M	5/4/72	W	F
1-11-001741	June 2, 2011	1641	8/31/84	W	F	2/9/87	W	M
1-11-001742	June 2, 2011	1713	9/20/82	W	M	9/1/86	W	F
1-11-001753	June 3, 2011	1419	11/30/78	W	M	5/3/82	B	F
1-11-001775	June 5, 2011	0217	6/29/87	B	M	2/14/92	W	F
1-11-001783	June 5, 2011	2127	7/21/66	W	F	3/15/65	W	M
1-11-001866	June 11, 2011	1623	2/19/73	B	F	8/23/90	B	F
1-11-001876	June 12, 2011	1200	4/5/88	W	M	5/10/91	B	F
1-11-001909	June 14, 2011	1623	11/25/94	W	F	12/18/69	W	F
1-11-001932	June 14, 2011	2304	11/14/83	W	M	4/2/82	W	F
1-11-001934	June 22, 2011	0737	10/1/62	B	F	2/12/69	W	M
1-11-002004	June 23, 2011	0058	7/21/66	W	F	5/28/96	W	F
1-11-002105	June 29, 2011	2002	8/20/98	B	M	9/29/62	B	F
1-11-002151	July 2, 2011	1903	2/23/60	W	M	9/24/62	W	M
1-11-002157	July 3, 2011	0433	12/10/86	W	M	10/9/87	W	F
1-11-002158	July 3, 2011	0455	2/11/58	W	M	8/24/54	W	F
1-11-002160	July 3, 2011	1451	9/14/94	B	F	1/16/73	B	F
1-11-002163	July 3, 2011	1930	8/31/83	W	M	1/5/86	W	F
1-11-002165	July 3, 2011	2007	2/20/63	W	M	10/23/69	W	F
1-11-002172	July 4, 2011	1154	6/20/80	B	M	6/3/85	B	F
1-11-002236	July 9, 2011	0035	7/20/95	W	M	5/26/60	W	M
1-11-002254	July 10, 2011	0130	3/11/63	W	M	4/5/41	W	M
1-11-002266	July 11, 2011	0043	2/17/83	W	M	1/10/89	W	F
1-11-002276	July 11, 2011	1227	8/30/97	W	F	1/7/76	W	F
1-11-002278	July 11, 2011	1442	3/12/86	W	M	9/26/44	W	F
1-11-002317	July 13, 2011	1449	12/7/69	B	M	9/27/75	W	F
1-11-002334	July 15, 2011	0731	12/21/89	W	M	4/9/88	W	F
1-11-002372	July 17, 2011	1447	1/9/90	B	M	1/14/92	B	F
1-11-002390	July 18, 2011	1805	2/20/90	B	M	7/21/82	A	F
1-11-002424	July 20, 2011	1858	7/12/90	B	M	8/27/91	B	F
1-11-002428	July 21, 2011	0035	11/30/83	W	F	2/5/81	W	M
1-11-002455	July 22, 2011	2323	9/8/65	W	M	7/12/93	W	M
1-11-002463	July 23, 2011	1416	1/12/87	B	M	2/28/97	W	F
1-11-002467	July 23, 2011	1934	12/19/95	B	F	6/8/54	B	F
1-11-002476	July 24, 2011	0727	11/30/79	W	M	12/31/77	W	F
1-11-002520	July 26, 2011	1549	5/19/93	W	M	7/20/54	W	F
1-11-002541	July 28, 2011	0230	2/18/80	W	F	8/1/74	W	M
1-11-002603	August 1, 2011	0942	3/20/98	B	F	8/23/77	W	F
1-11-002607	August 1, 2011	1623	7/3/89	B	M	6/4/88	B	F
1-11-002634	August 3, 2011	1655	1/10/99	W	F	10/6/77	W	F

Huber Heights-2011

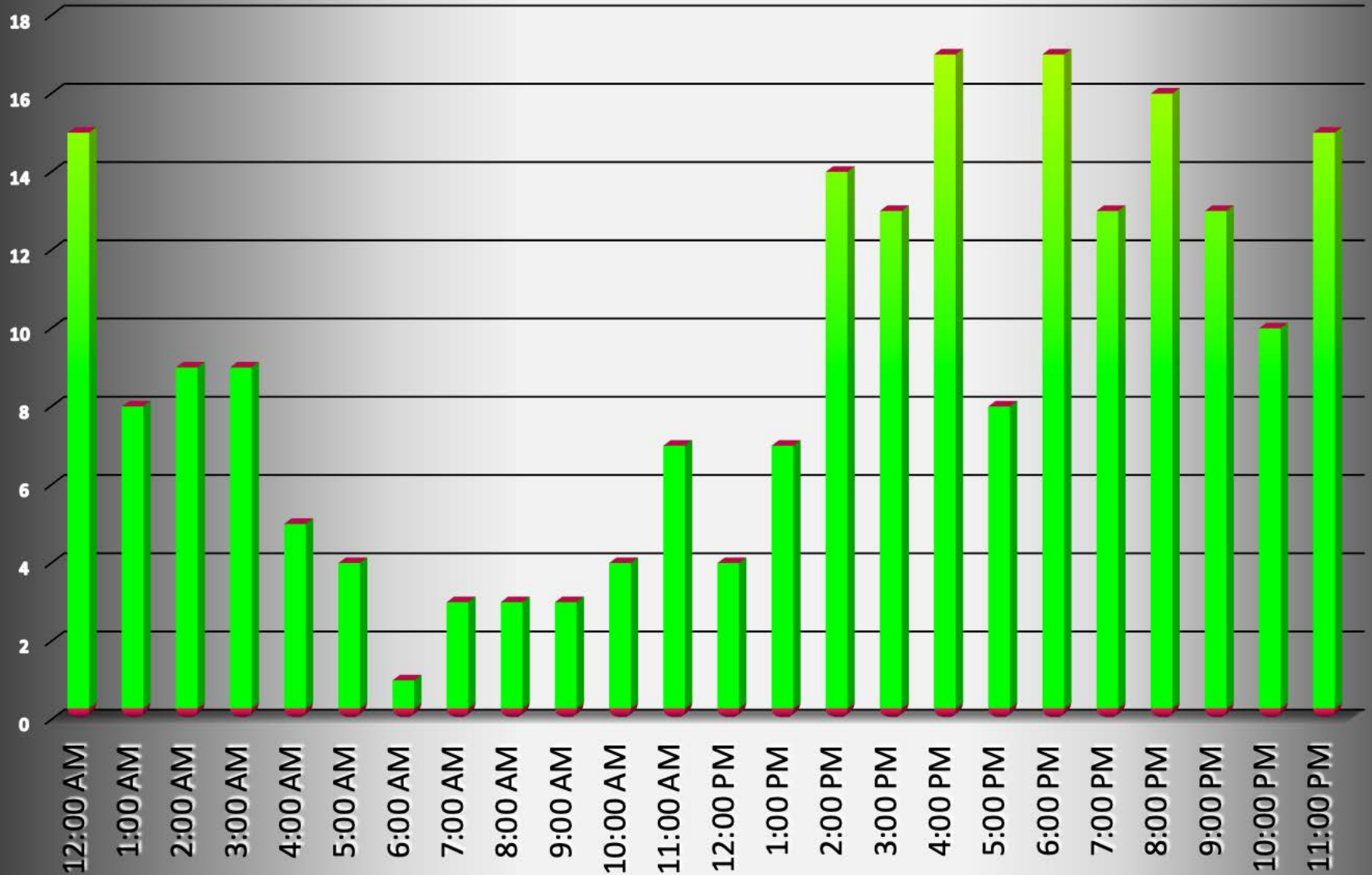
Incident			Arrestee			Complainant		
Incident #	Date Reported	Time	Age or Birth Year	Race	Sex	Age or Birth Year	Race	Sex
1-11-002638	August 3, 2011	1813	11/9/99	W	F	12/22/80	W	F
1-11-002668	August 6, 2011	0042	2/17/83	W	M	1/10/89	W	F
1-11-002721	August 10, 2011	1807	12/9/62	W	M	7/2/65	W	F
1-11-002747	August 12, 2011	1833	8/5/92	W	F	4/20/89	W	M
1-11-002781	August 14, 2011	0942	5/13/74	W	M	4/10/39	W	F
1-11-002819	August 16, 2011	0931	7/7/98	W	M	6/7/68	W	F
1-11-002830	August 16, 2011	2028	2/20/90	B	M	7/21/82	B	F
1-11-002850	August 17, 2011	2037	4/19/77	W	F	2/19/71	W	M
1-11-002868	August 19, 2011	1551	1/10/99	W	F	10/6/77	W	F
1-11-002928	August 22, 2011	1848	9/22/80	W	M	7/9/83	W	F
1-11-002990	August 27, 2011	0001	6/10/62	W	M	3/9/78	W	F
1-11-003030	August 30, 2011	0036	10/19/74	W	F	8/23/65	W	M
1-11-003039	August 30, 2011	1506	8/20/98	B	M	9/29/62	B	F
1-11-003042	August 30, 2011	1832	9/18/92	W	F	3/29/92	W	M
1-11-003058	August 31, 2011	2122	11/13/79	W	F	2/13/49	W	F
1-11-003062	August 31, 2011	2321	1/3/77	W	M	4/22/84	W	F
1-11-003067	September 1, 2011	1033	4/19/76	B	M	10/17/78	B	F
1-11-003084	September 2, 2011	0001	7/2/93	W	M	9/17/73	W	F
1-11-003105	September 4, 2011	1824	3/31/94	W	M	9/20/71	W	M
1-11-003128	September 6, 2011	1824	8/14/99	B	M	6/24/68	W	F
1-11-003136	September 8, 2011	0011	12/28/79	W	M	8/16/90	W	F
1-11-003156	September 9, 2011	1714	1/26/93	W	F	2/7/70	W	F
1-11-003157	September 9, 2011	1717	1/4/88	B	M	5/6/89	B	F
1-11-003171	September 11, 2011	0327	6/9/74	W	F	8/4/95	W	M
1-11-003191	September 12, 2011	0403	1/25/81	W	F	12/14/79	W	M
1-11-003203	September 12, 2011	2117	9/21/96	B	M	9/14/82	B	M
1-11-003205	September 12, 2011	2330	3/9/87	W	M	4/29/86	W	F
1-11-003228	September 14, 2011	0006	8/23/65	W	M	9/17/92	W	M
1-11-003233	September 14, 2011	1128	12/23/76	B	F	6/2/61	B	M
1-11-003314	September 21, 2011	1819	4/6/93	W	M	8/31/94	W	F
1-11-003323	September 21, 2011	2329	8/9/96	W	F	3/15/98	W	M
1-11-003336	September 22, 2011	1858	3/28/84	B	M	10/17/63	W	F
1-11-003352	September 24, 2011	0102	2/3/85	B	M	11/24/79	B	F
1-11-003367	September 25, 2011	1523	10/14/93	W	F	9/3/67	W	F
1-11-003376	September 26, 2011	0556	4/14/74	B	M	12/14/92	B	M
1-11-003425	September 29, 2011	1601	8/16/85	W	M	7/15/84	W	M
1-11-003432	September 30, 2011	0347	6/7/86	B	M	5/4/91	W	F
1-11-003458	October 1, 2011	2137	8/14/99	B	M	6/9/10	B	M
1-11-003499	October 4, 2011	2232	10/9/81	W	M	4/9/87	W	F
1-11-003535	October 7, 2011	0009	3/16/71	W	M	7/16/69	W	F
1-11-003537	October 7, 2011	0603	6/7/85	B	M	10/12/86	B	F
1-11-003541	October 7, 2011	2022	8/7/73	W	M	7/24/87	W	F
1-11-003551	October 8, 2011	2201	5/8/71	W	M	8/30/80	W	F
1-11-003574	October 10, 2011	1955	5/14/73	W	M	4/12/80	W	F
1-11-003585	October 11, 2011	0324	3/7/66	W	M	7/12/75	W	F
1-11-003609	October 12, 2011	0813	11/11/77	W	M	4/29/80	W	F
1-11-003616	October 12, 2011	1810	10/5/75	B	M	4/11/81	B	F
1-11-003617	October 12, 2011	2028	7/30/68	W	M	1/27/68	W	F
1-11-003626	October 13, 2011	1212	3/25/66	A	M	3/8/74	A	F
1-11-003633	October 13, 2011	2009	10/28/66	W	M	9/10/63	W	F
1-11-003636	October 14, 2011	0334	4/7/89	W	M	6/22/69	W	M
1-11-003649	October 14, 2011	2110	7/22/72	B	M	2/3/76	B	F
1-11-003659	October 15, 2011	1657	1/10/99	W	F	10/6/72	W	F
1-11-003661	October 15, 2011	1915	3/20/98	B	F	SOCIETY		
1-11-003664	October 15, 2011	2023	5/27/92	W	F	2/12/71	W	F
1-11-003705	October 20, 2011	0047	6/19/91	B	M	3/28/72	B	F

Huber Heights-2011

Incident			Arrestee			Complainant		
Incident #	Date Reported	Time	Age or Birth Year	Race	Sex	Age or Birth Year	Race	Sex
1-11-003708	October 20, 2011	1355	11/6/75	W	M	7/9/83	W	F
1-11-003813	October 28, 2011	1339	9/21/93	W	M	6/6/90	W	F
1-11-003824	October 29, 2011	1605	10/27/94	W	M	11/7/66	W	F
1-11-003839	October 30, 2011	1856	4/20/89	W	M	12/8/90	W	F
1-11-003851	October 31, 2011	2359	12/24/77	W	M	5/6/78	W	F
1-11-003868	November 2, 2011	0300	7/31/71	B	F	11/6/92	B	M
1-11-003883	November 3, 2011	1050	1/12/73	W	M	2/19/72	W	F
1-11-003885	November 3, 2011	1240	3/9/87	W	M	4/29/86	W	F
1-11-003892	November 3, 2011	1903	4/24/91	W	M	5/24/65	W	F
1-11-003893	November 3, 2011	2348	7/19/88	W	M	3/14/92	W	F
1-11-003916	November 6, 2011	0237	3/9/78	B	F	1/26/68	B	M
1-11-003931	November 6, 2011	2224	12/30/61	W	M	3/27/83	W	F
1-11-004008	November 13, 2011	0214	2/24/82	W	F	2/9/82	B	M
1-11-004009	November 13, 2011	0228	2/2/50	W	M	4/13/56	W	F
1-11-004019	November 14, 2011	0352	5/3/80	W	M	3/16/84	W	F
1-11-004028	November 14, 2011	1317	8/23/71	B	M	11/8/79	B	F
1-11-004031	November 14, 2011	1631	7/28/85	W	M	11/27/84	W	F
1-11-004046	November 15, 2011	1159	9/4/90	B	F	9/24/69	B	F
1-11-004047	November 15, 2011	1438	8/27/88	B	F	9/18/80	B	M
1-11-004048	November 15, 2011	1505	2/9/73	B	M	9/12/01	B	F
1-11-004085	November 18, 2011	1903	12/26/82	B	M	11/8/80	B	F
1-11-004117	November 21, 2011	1524	5/8/85	W	M	7/22/87	W	F
1-11-004128	November 22, 2011	1715	6/20/80	W	M	9/6/60	W	F
1-11-004159	November 25, 2011	0854	6/16/85	B	M	3/22/87	B	F
1-11-004160	November 26, 2011	0050	2/3/86	B	M	4/19/62	B	F
1-11-004197	November 28, 2011	2048	5/12/88	W	M	12/16/85	W	F
1-11-004225	November 30, 2011	1843	9/25/96	W	F	8/31/74	W	F
1-11-004230	December 1, 2011	0114	2/28/60	B	M	12/27/62	B	F
1-11-004244	December 7, 2011	0017	1/18/76	W	M	4/24/93	W	F
1-11-004282	December 4, 2011	1520	8/8/76	B	M	1/18/74	B	F
1-11-004300	December 6, 2011	0453	1/20/83	W	M	1/19/89	W	F
1-11-004318	December 7, 2011	1150	9/4/89	W	M	4/13/90	W	F
1-11-004343	December 8, 2011	2024	1/21/81	W	M	10/17/76	W	F
1-11-004344	December 8, 2011	2132	9/11/65	B	M	7/28/66	B	F
1-11-004378	December 11, 2011	0516	2/6/84	W	F	9/19/81	B	M
1-11-004383	December 11, 2011	1906	1/3/85	W	M	9/27/87	W	F
1-11-004399	December 13, 2011	1947	12/2/75	W	M	12/3/81	W	F
1-11-004440	December 16, 2011	1659	11/7/82	W	F	8/30/78	W	M
1-11-004458	December 17, 2011	1239	7/8/88	W	M	2/25/62	W	M
1-11-004496	December 20, 2011	1633	7/7/97	B	F	5/28/78	W	F
1-11-004511	December 22, 2011	1134	7/3/75	B	M	10/19/53	B	M
1-11-004552	December 26, 2011	0253	1/12/87	B	M	9/29/97	W	F
1-11-004561	December 26, 2011	2213	8/5/91	B	F	4/9/83	B	M
1-11-004578	December 28, 2011	1725	10/5/83	B	M	11/8/86	B	F
1-11-004585	December 28, 2011	2234	12/2/86	W	M	5/2/87	W	F
1-11-004590	December 29, 2011	0131	8/7/65	B	M	8/1/98	B	M
1-11-004593	December 29, 2011	1441	9/7/77	W	M	2/8/85	W	F
1-11-004594	December 29, 2011	1611	11/16/92	W	M	5/14/61	W	F
1-11-004604	December 30, 2011	2325	3/28/84	B	M	10/17/63	W	F
1-11-004611	December 31, 2011	1758	2/26/76	W	F	3/15/50	W	F
1-11-004613	December 31, 2011	2229	1/18/90	W	M	1/5/94	W	M

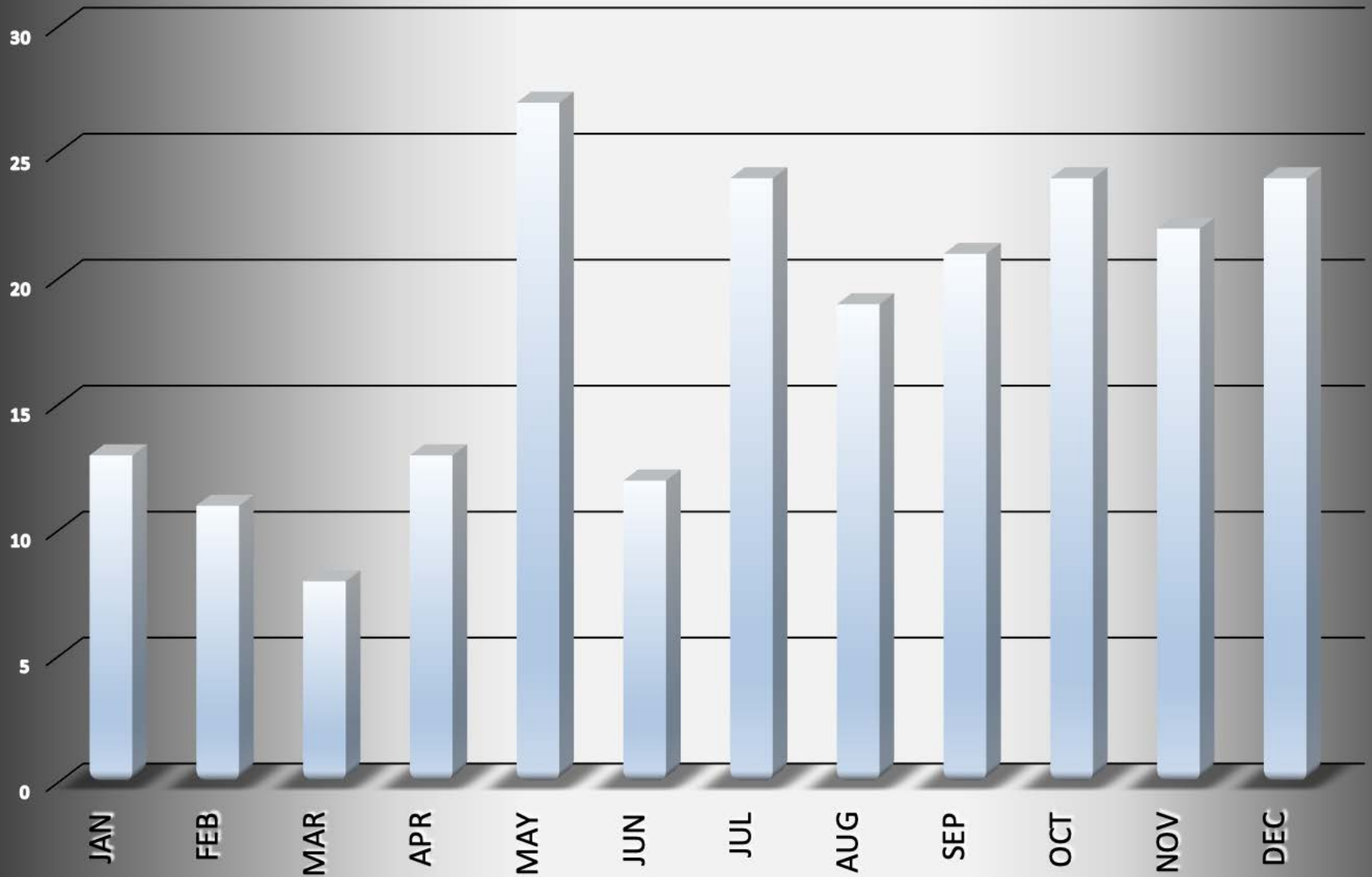
Huber_Heights-2011

Arrests by hour of the day - 218 total



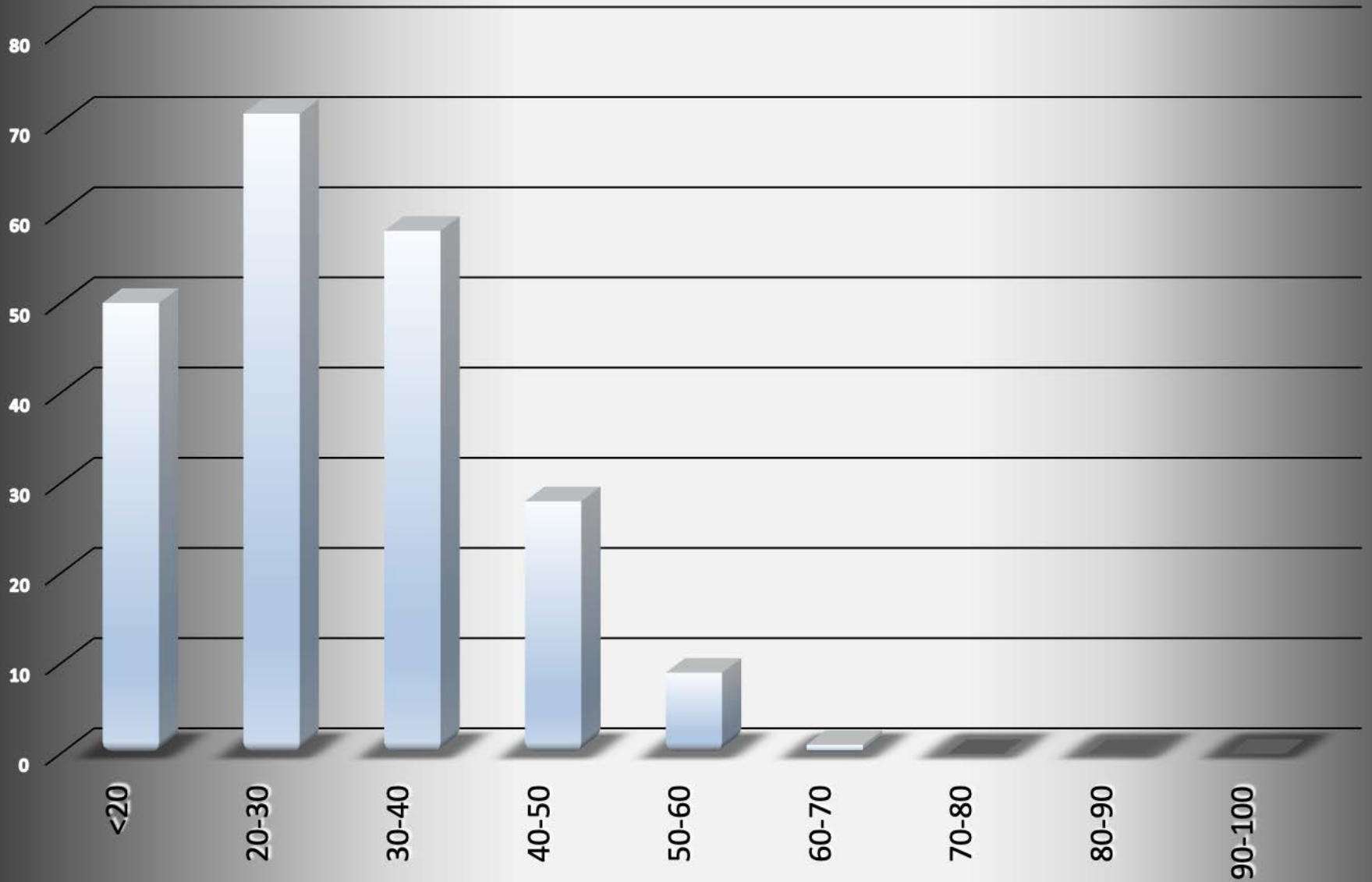
Huber_Heights-2011

Arrests by Month - 218 total



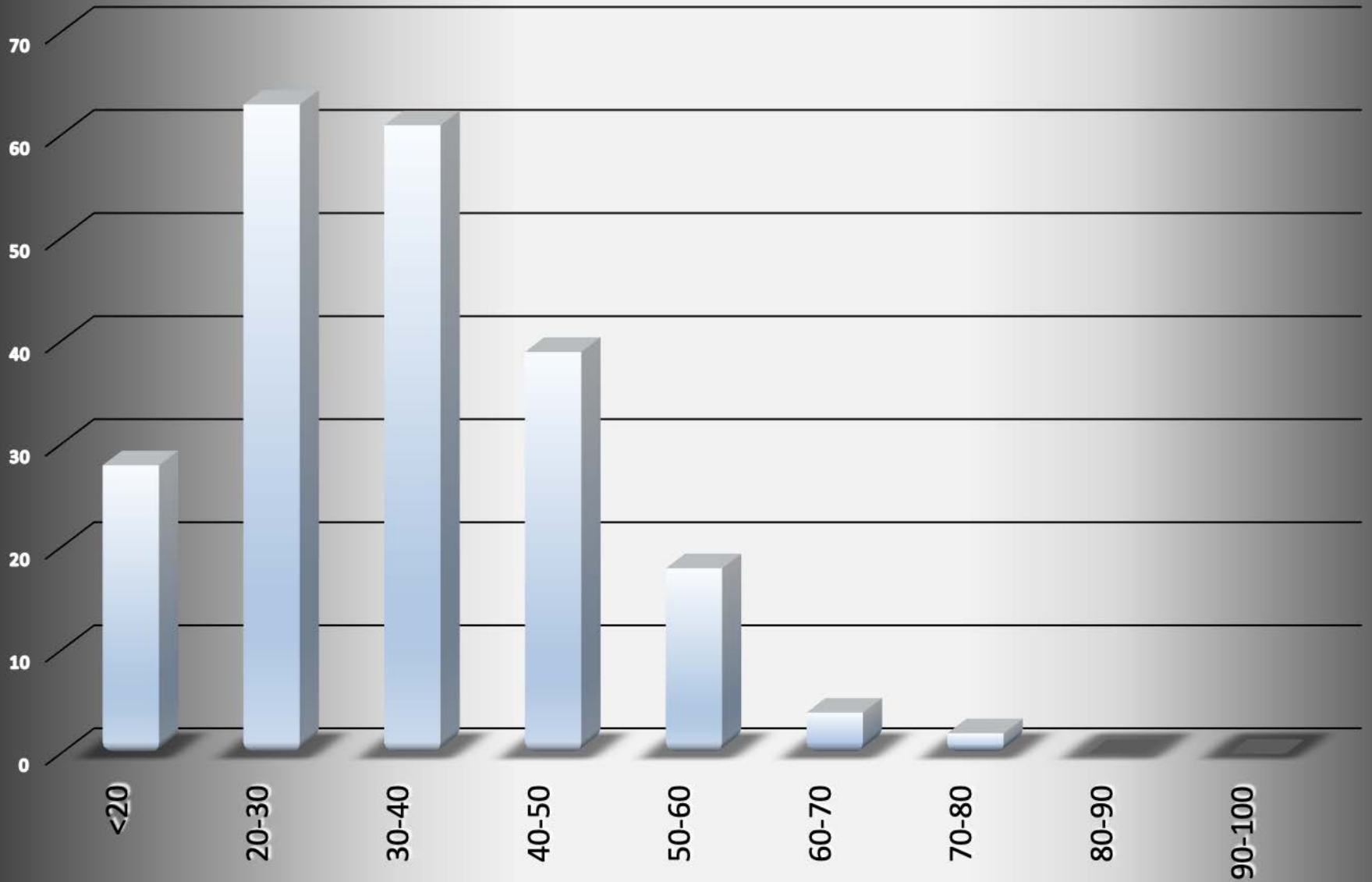
Huber_Heights-2011

Age of Arrestee

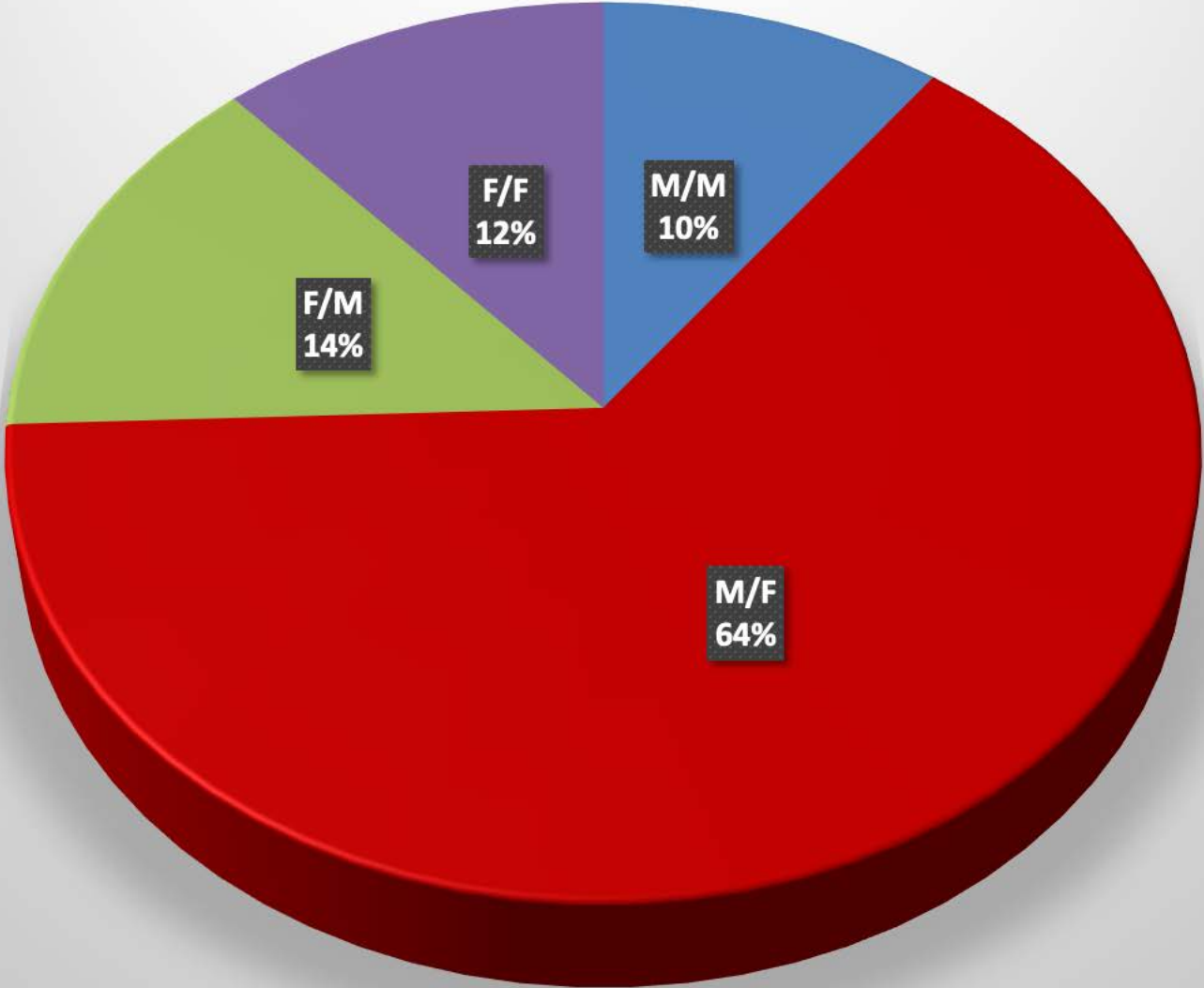


Huber_Heights-2011

Age of Complainant

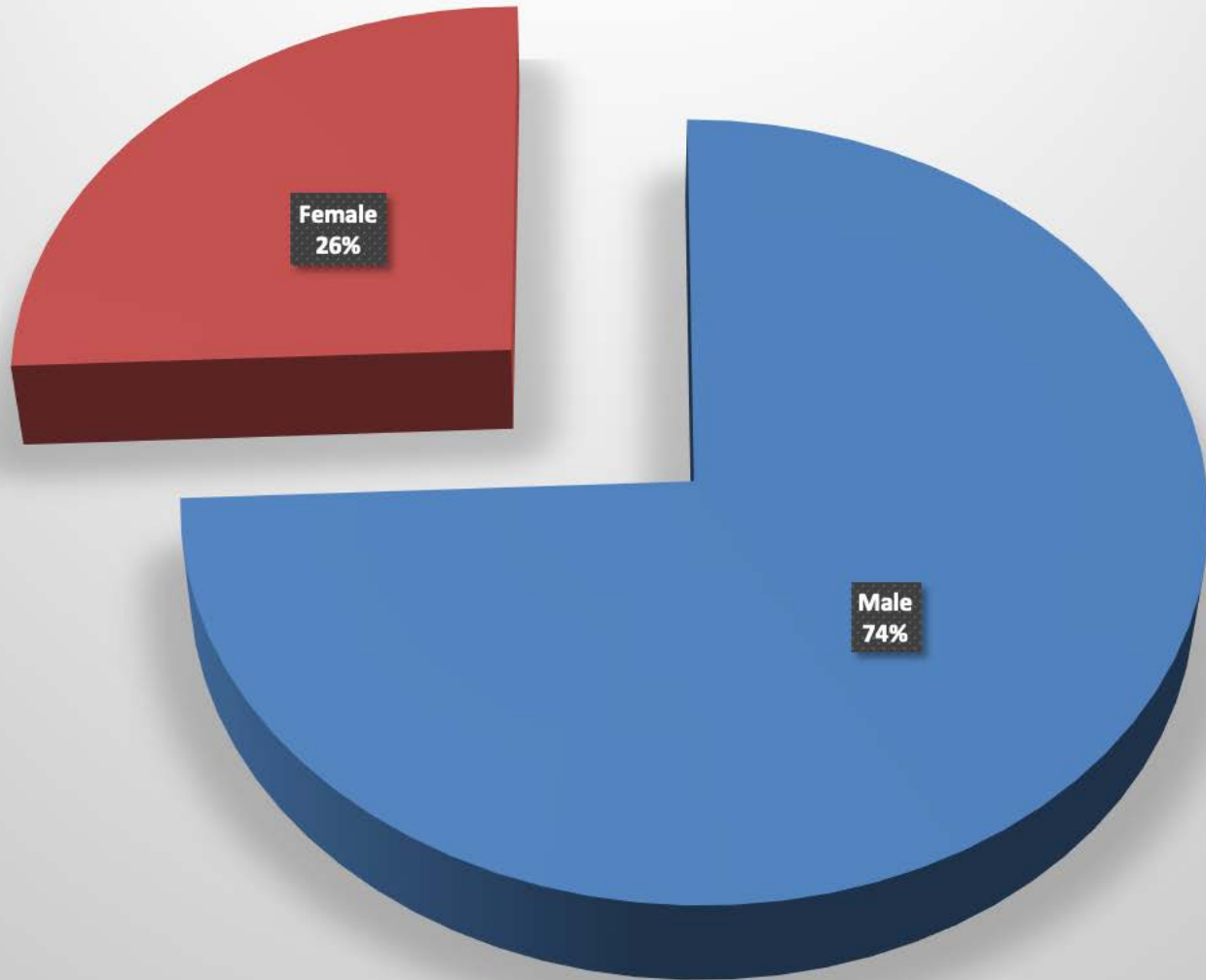


Huber_Heights-2011
Arrestee/Complainant Sex - 218 total



Huber_Heights-2011

Sex of Arrestees



Huber_Heights-2011 Sex of Complainants

