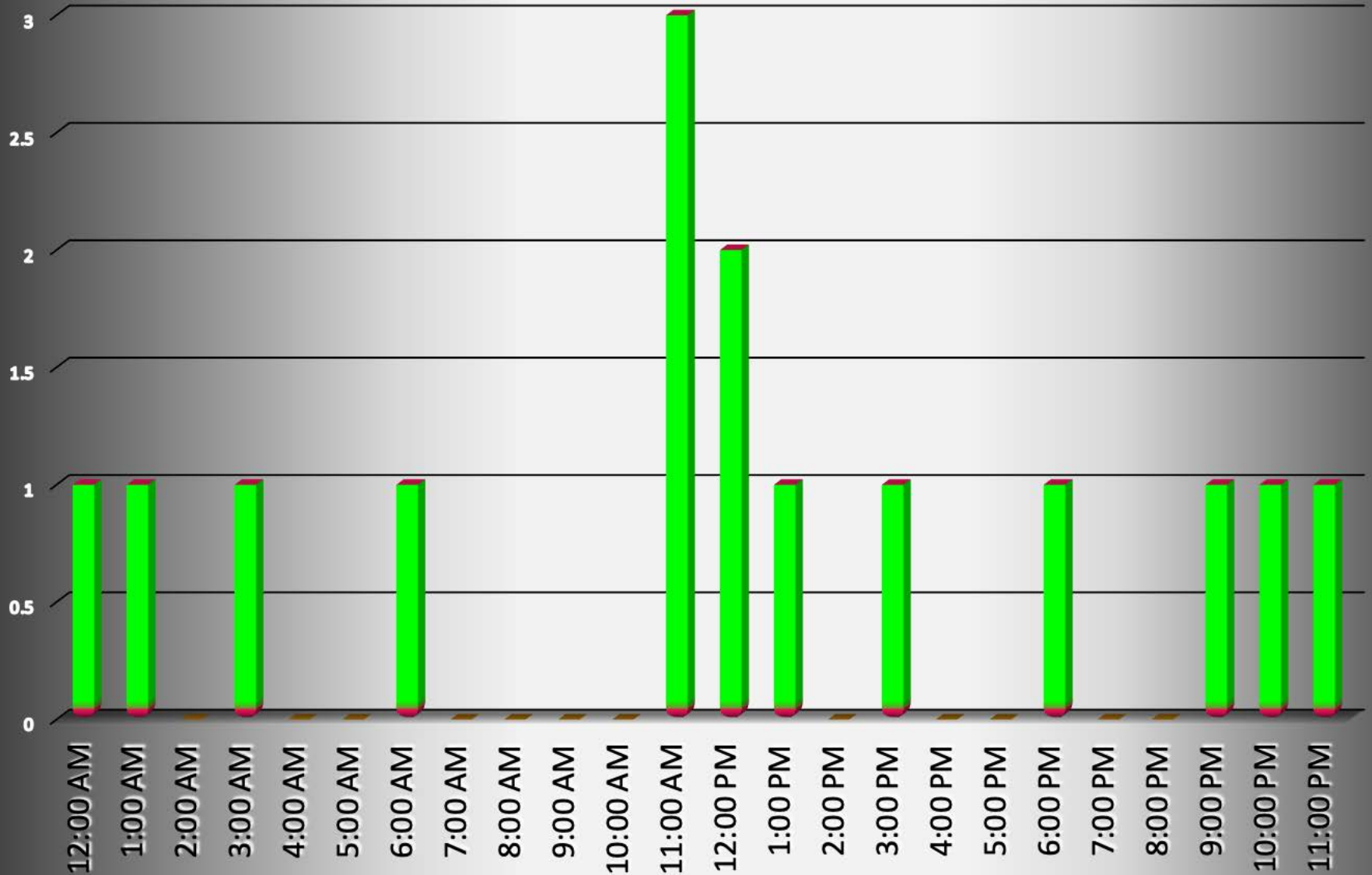


Clayton-2012										
Incident			Arrestee			Complainant			Arrestee	Complainant
Incident #	Date Reported	Time	Age or Birth Year	Race	Sex	Age or Birth Year	Race	Sex	Marital Status	Marital Status
12-20	January 5, 2012	1:45	27	B	M	26	B	F	MAR	MAR
12-96	February 2, 2012	23:55	42	B	M	34	W	F	SIN	SIN
12-524	March 28, 2012	15:21	20	B	M	21	B	F	SIN	SIN
12-535	March 31, 2012	0:49	34	B	M	24	W	F	SIN	SIN
12-616	April 16, 2012	12:34	28	W	F	31	W	M	SIN	SIN
12-830	May 16, 2012	22:53	25	B	M	28	W	F	SIN	SIN
12-833	May 17, 2012	11:42	33	W	M	62	W	M	SIN	MAR
12-951	June 2, 2012	13:28	21	W	M	24	W	F	SIN	SIN
12-1105	June 24, 2012	11:37	25	B	M	34	B	F	SIN	SIN
12-1320	July 26, 2012	12:15	57	W	M	36	B	F	SIN	SIN
12-1372	August 4, 2012	3:25	22	B	F	24	W	M	SIN	SIN
12-1825	October 4, 2012	6:11	24	B	F	27	B	M	SIN	SIN
12-1937	October 16, 2012	21:11	24	B	M	27	W	F	SIN	SIN
12-2127	November 10, 2012	11:03	40	W	M	33	W	F	SIN	SIN
12-2226	November 23, 2012	19:00	45	B	M	36	B	F	SIN	SIN

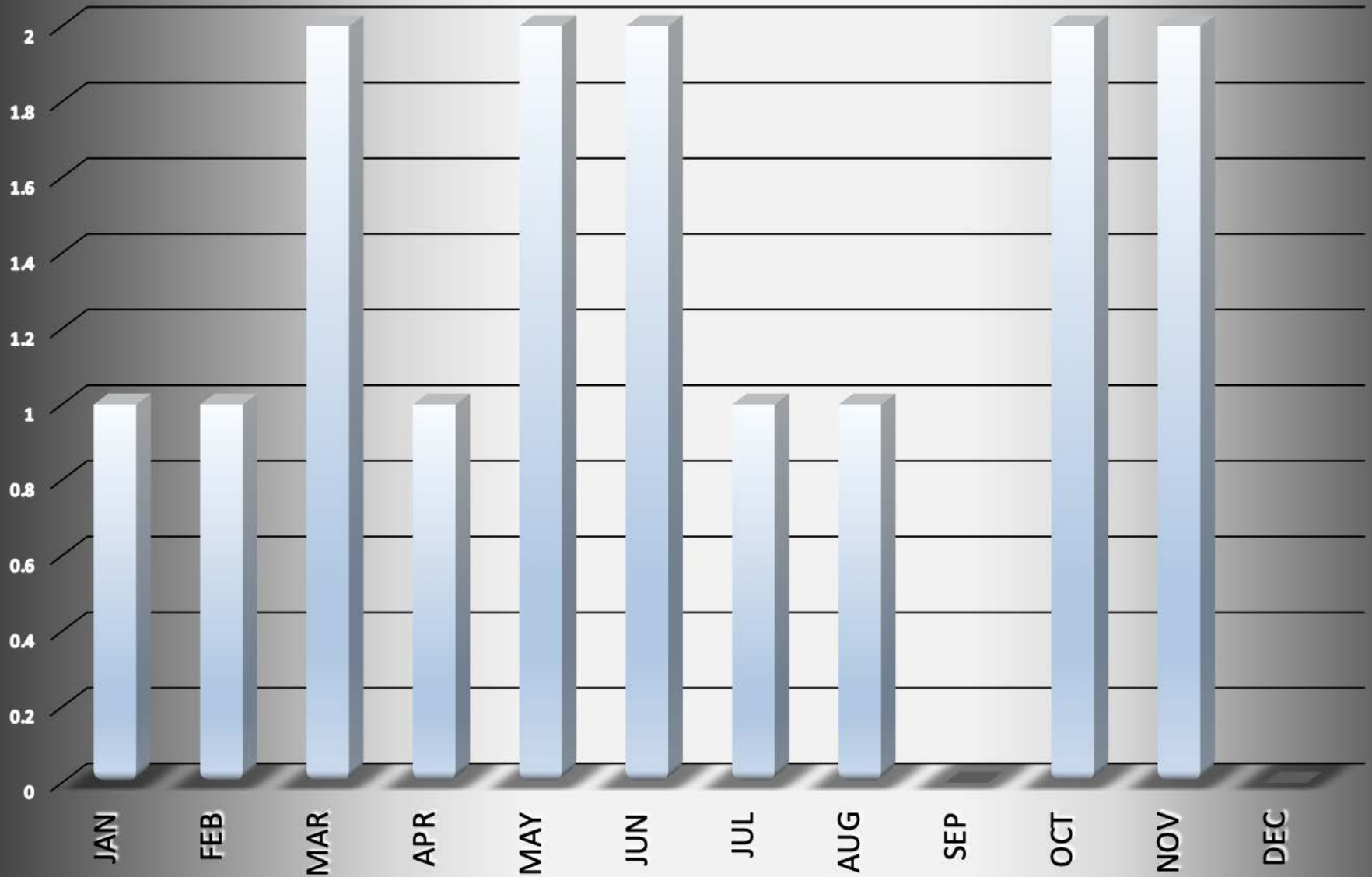
# Clayton-2012

## # Arrests by hour of the day - 15 total

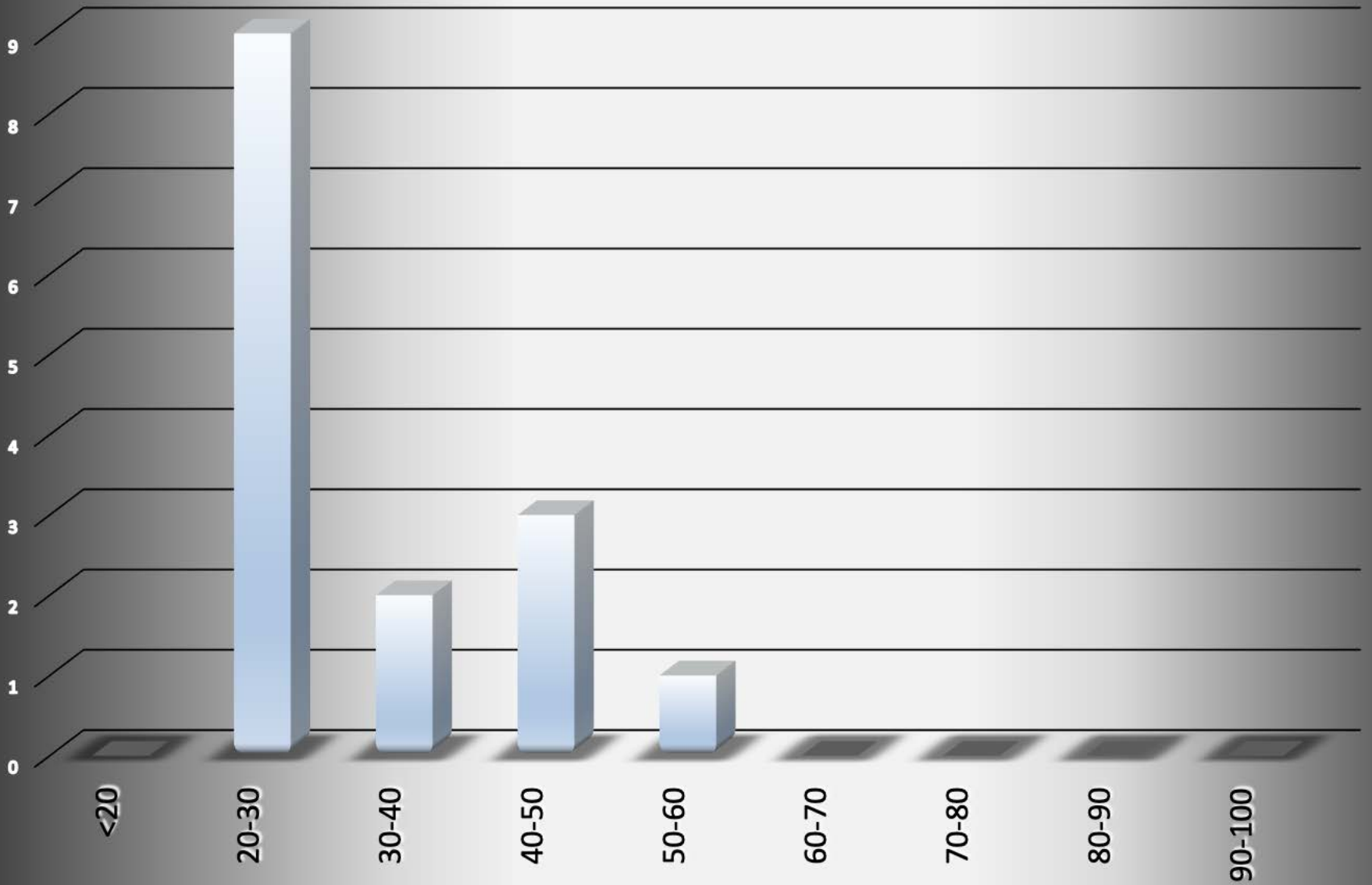


# Clayton-2012

## # Arrests by Month - 15 total

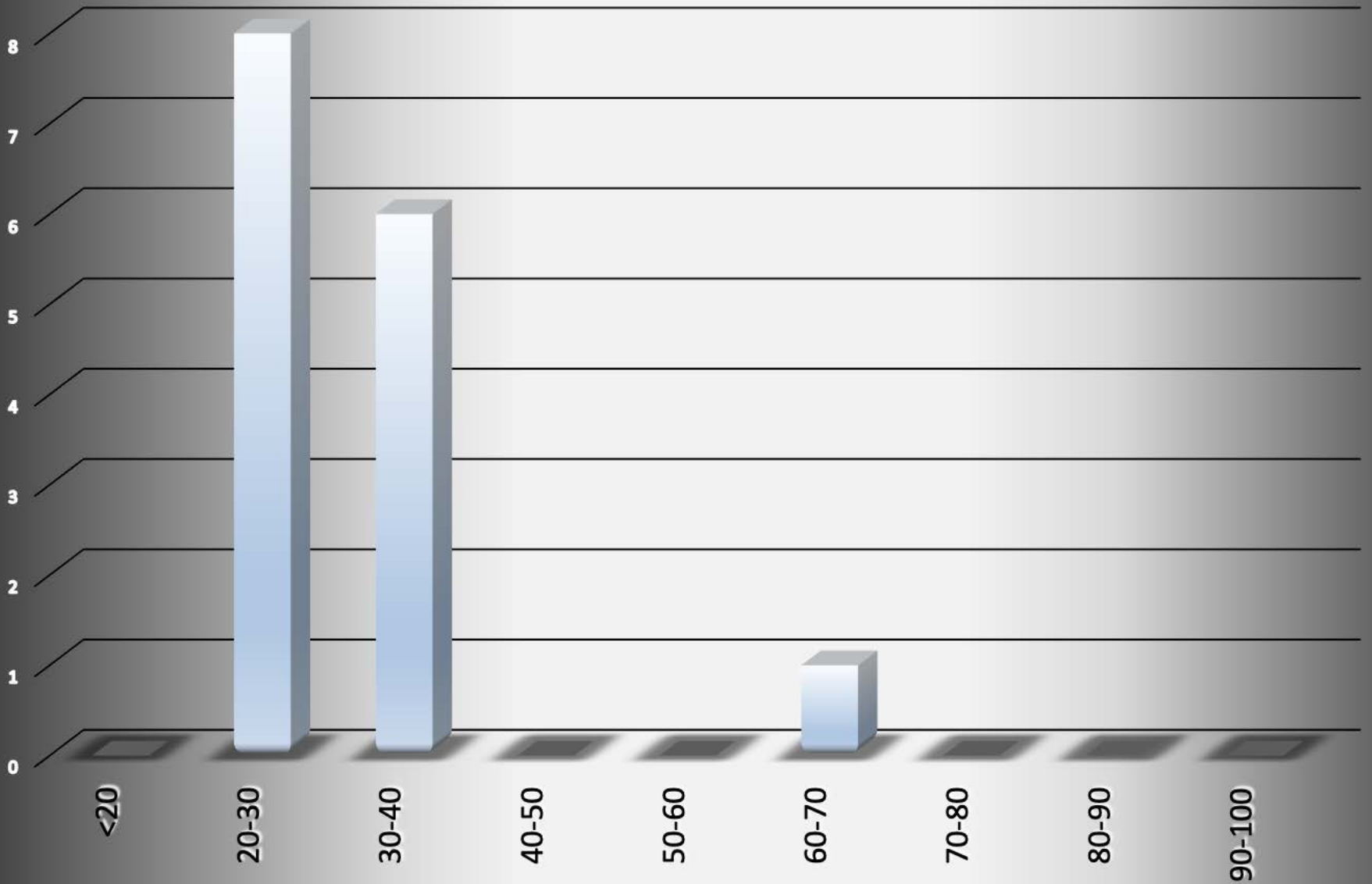


# Clayton-2012 Age of Arrestee

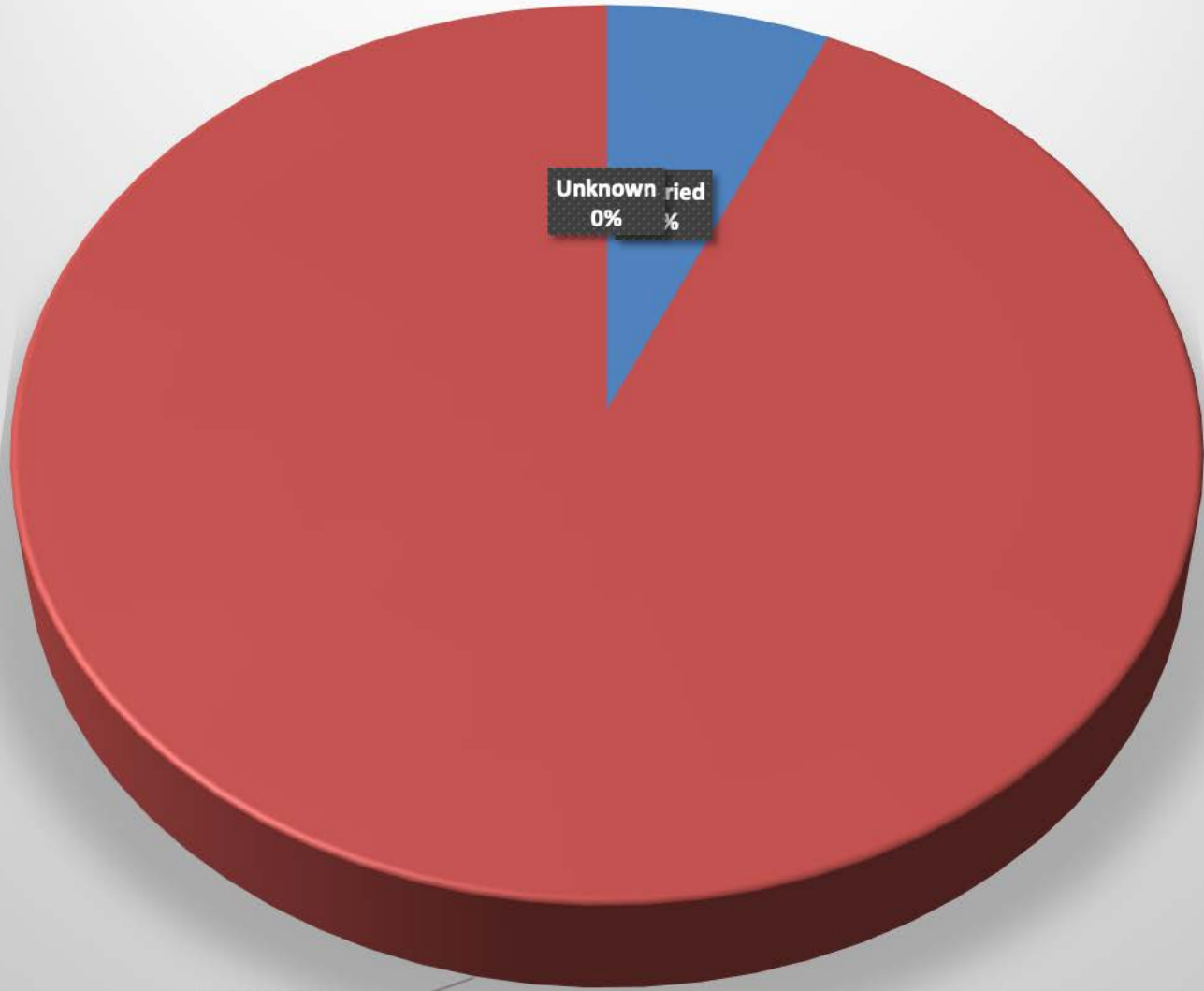


# Clayton-2012

## Age of Complainant



# Clayton-2012 Arrestee Marital Status



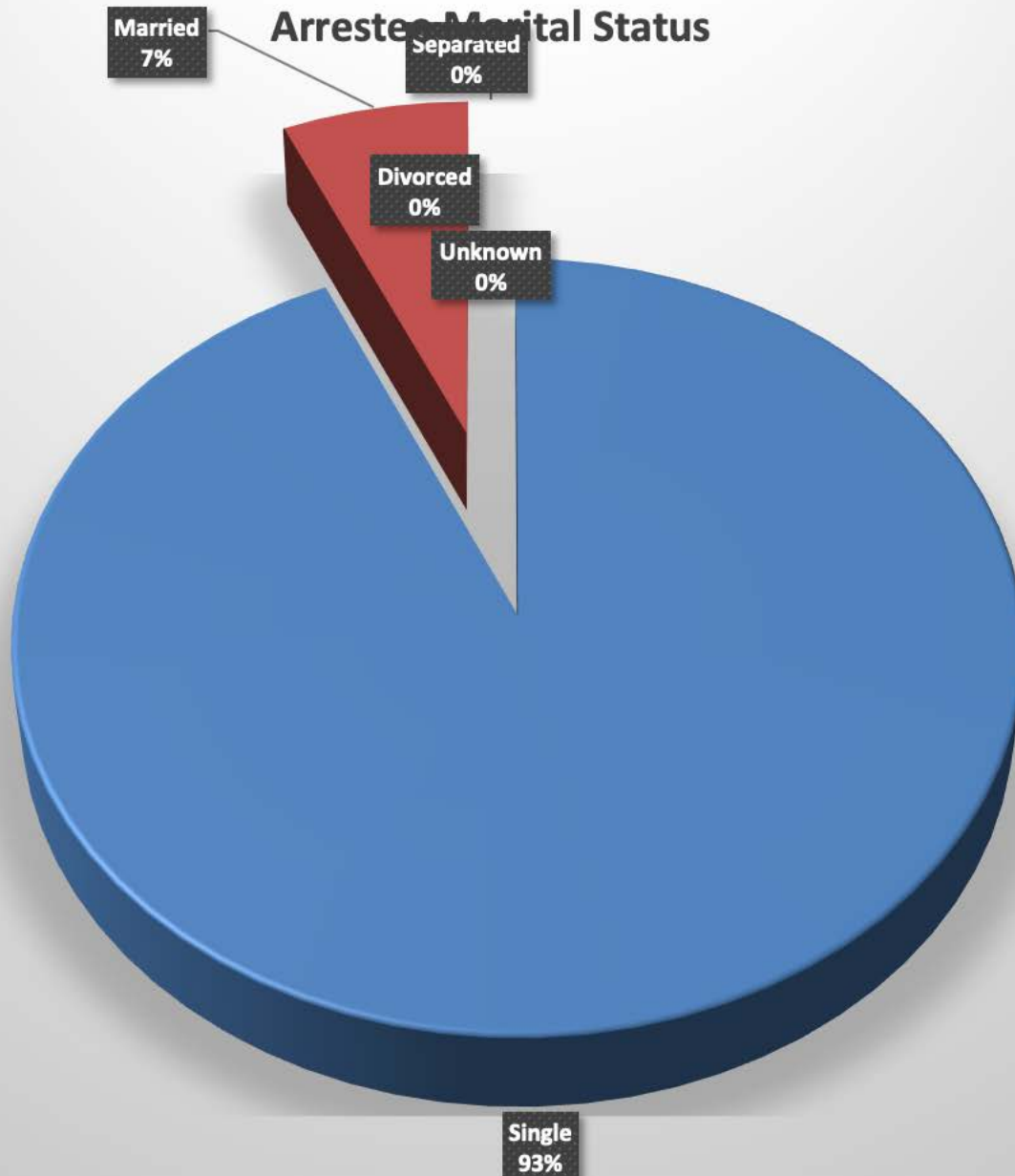
Not Married  
93%

Unknown  
7%

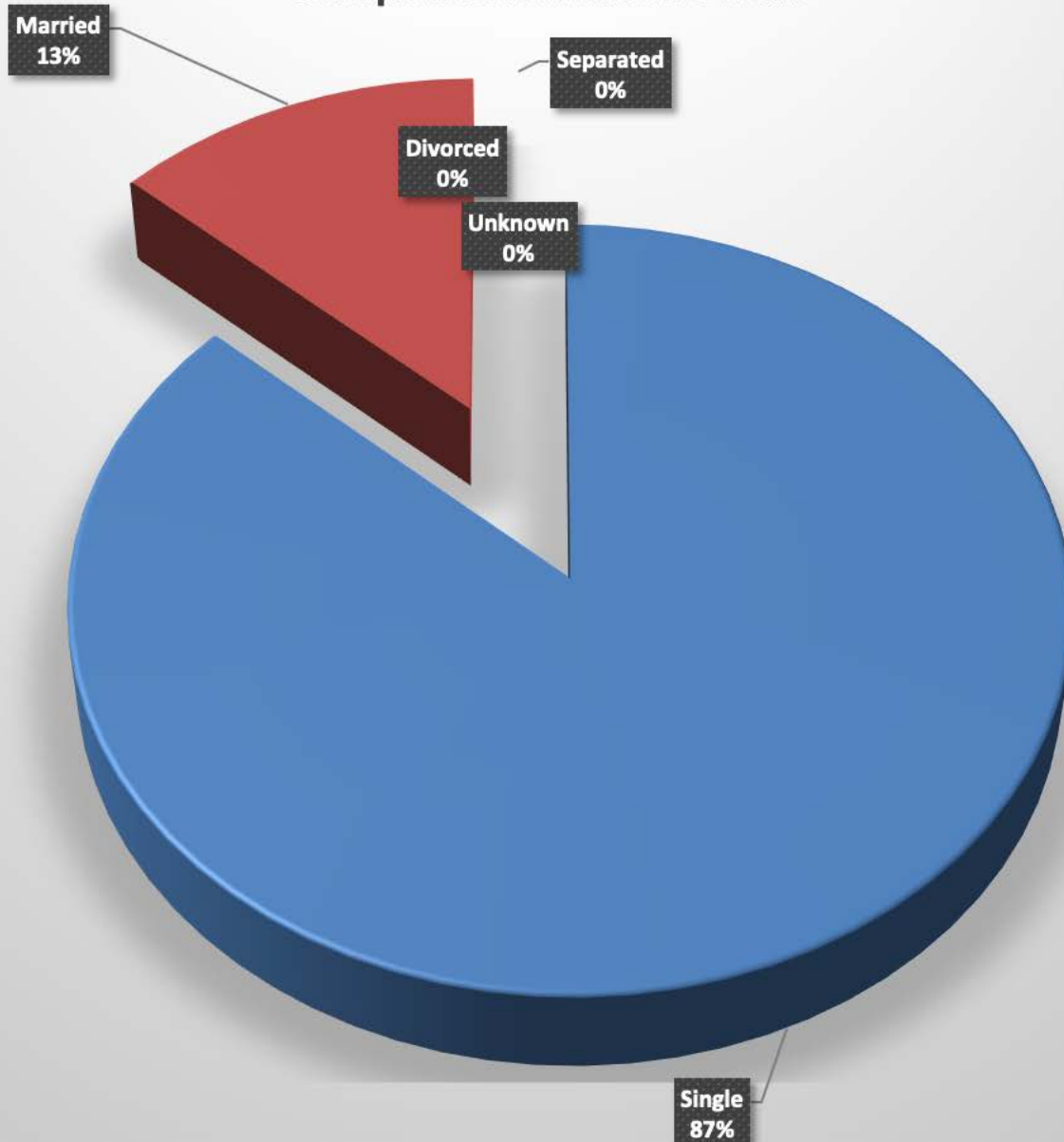
Married  
0%

# Clayton-2012

## Arrested Marital Status

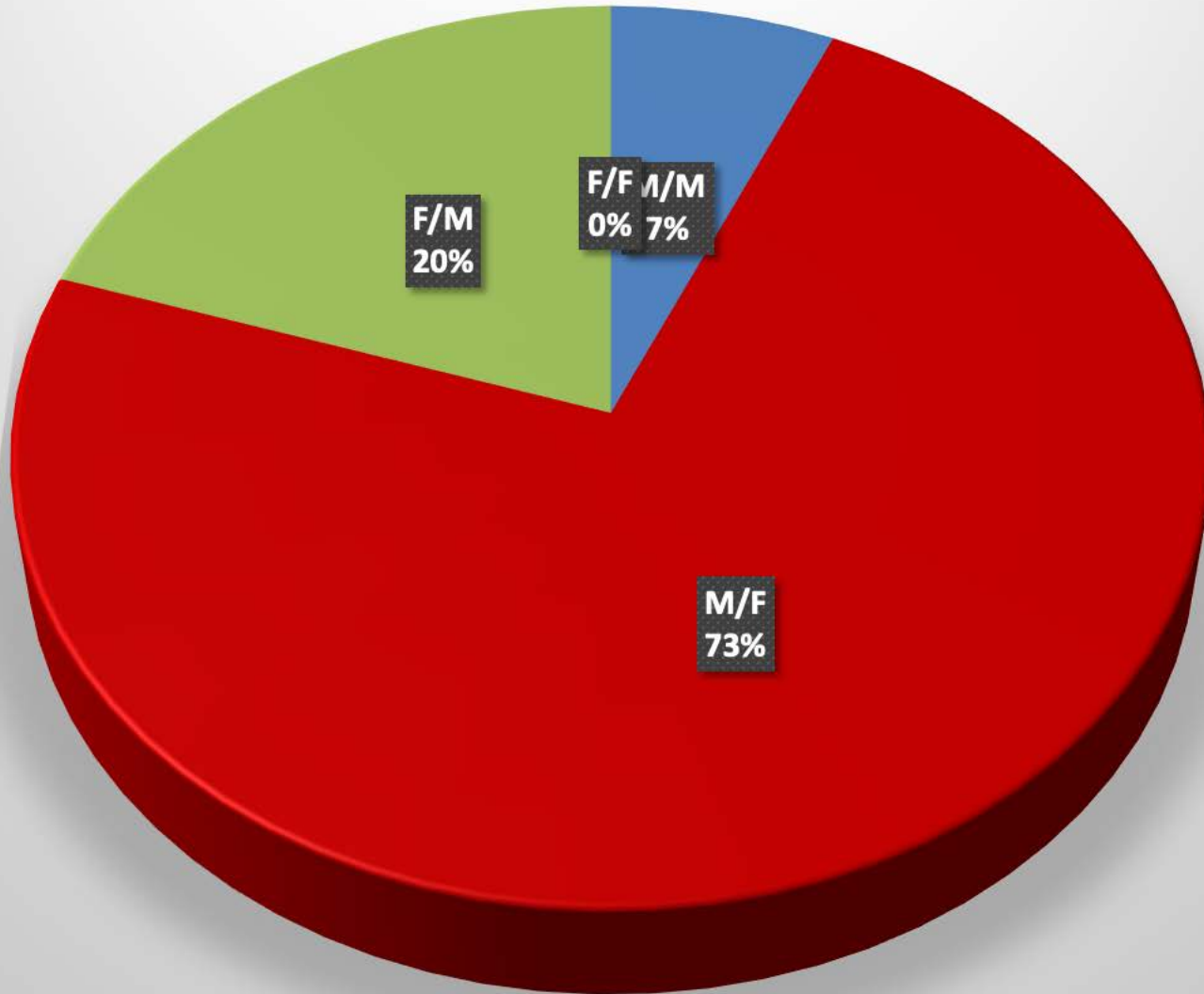


# Clayton-2012 Complainant Marital Status

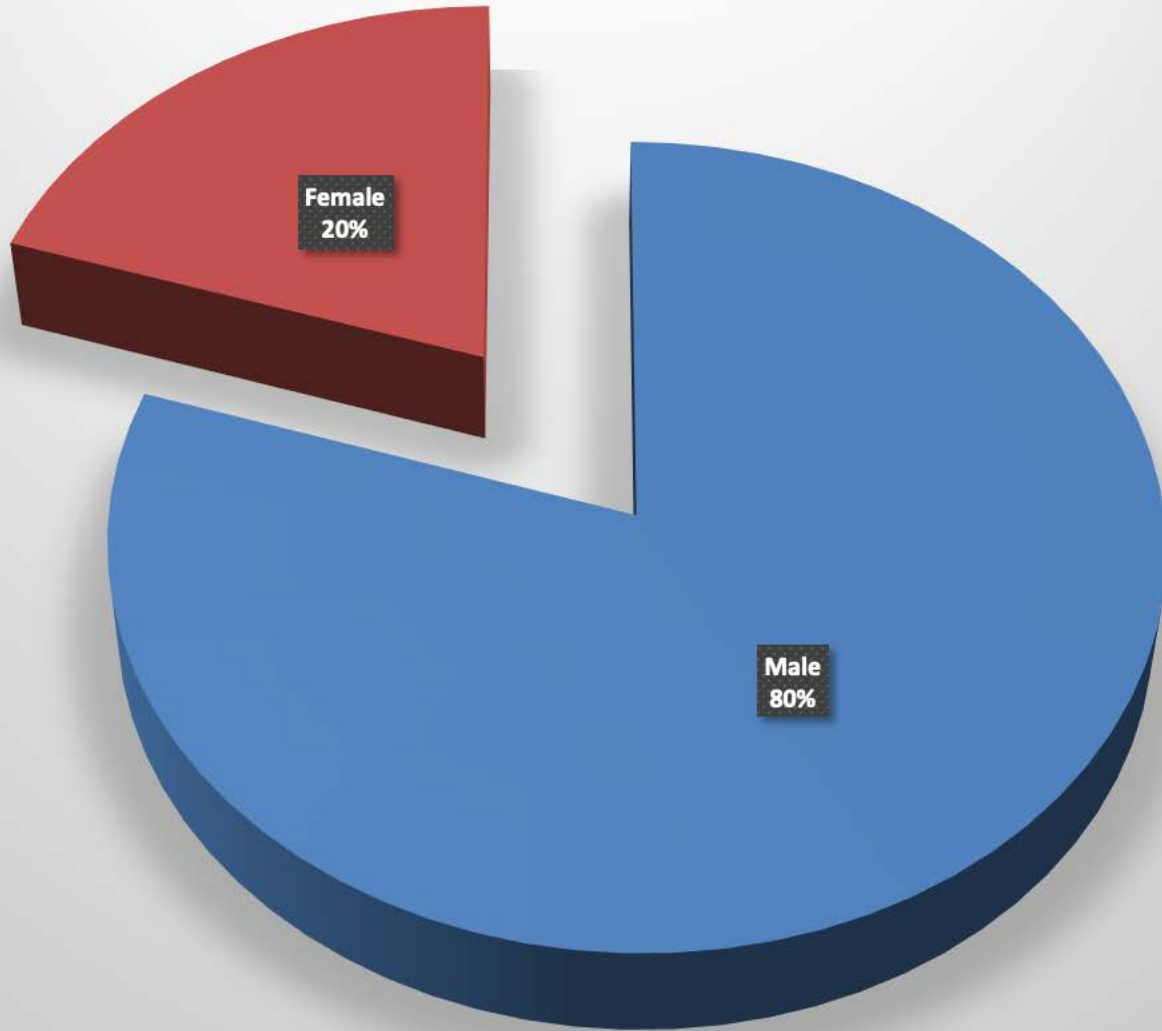




Clayton-2012  
Arrestee/Complainant Sex - 15 total



# Clayton-2012 Sex of Arrestees



# Clayton-2012

## Sex of Complainants

